

ACADEMY OF HOLISTIC MEDICINE



Quantum Medicine & Non-linear System Analysis

Textbook

Part I

Authors

Detlef Pöhlmann

Viktor Zyganow

Publisher:

Academy of Holistic Medicine Berlin, Germany

All rights reserved.

2nd edition 2022

Copyright© 2022 by Detlef Pöhlmann and Viktor Zyganow. All rights reserved. No part of this publication may be reproduced or transmitted in any form or by any means, electronic or mechanical, including photocopying, recording or any information storage and retrieval system.

The individual articles, theories and practical suggestions contained in this book have been carefully researched and verified by the authors, but no guarantees can be given. Liability of the authors or the Academy of Holistic Medicine and its appointees for bodily injury, property damage and financial loss`s excluded.

Publishers and Authors:

Detlef Pöhlmann, Naturopath

- Member of the UG Academy of Holistic Medicine (since 2020)
- Wegamed Center of Competence for Analysis and Therapy (since 2018)
- Certified DNS (dynamic neuromuscular stabilization) trainer
- Specialist in Biomechanics according to Justin Price (Biomechanical Method)
- Training in Osteopathy at the Institute of Applied Osteopathy IFAO 2001
- Regulatory diagnosis and psychokinesiology by Dr F. Klinghardt 2000
- Emotional transformation and colourlight therapy by Dr. Steven Vasquez, 2000
- Neural by Dr. Hunecke, 1999
- Studied as a naturopath in Berlin, 1998:
- Lecturer in applications with non-linear and scalar wave systems (since 2016)
- Lecturer in colourlight therapy (since 2001)

Marktstrasse 2; 36037 Fulda;Tel.:+496613801886-info@heilpraktiker-poehlmann.de-www.heilpraktiker-poehlmann.de

Prof. Dr. Viktor Zyganow

- 2007, Appointment as professor of regenerative medicine, spa medicine and physiotherapy at VECC-Moscow (the highest qualification commission).
- 2010, Founding of the Academy of Holistic Medicine-UG Academy of Holistic Medicine in Falkensee, Germany (President).
- 2010, Awarded with the International Vernadsky Silver Star for his scientific achievements by the Moscow Inter Academy Association.
- Appointment as a visiting professor in 2011 and an honorary professor in 2014 at Dnepropetrovsk Medical Institute of Traditional and Nonconventional Medicine, Dnepropetrovsk, Ukraine (today Dnepr).
- July 4, 2020. Appointment as scientific consultant of the official representative office of the International Nobel Information Center in Ukraine.

Nobelstrasse 2;14612 Falkensee;Tel.:+493322421465 - Academy-holmed@web.de - www.academy-holmed.com

Scientific and training seminars, webinars and other materials are presented on the official websites and channels of the Academy of Holistic Medicine:

www.academy-holmed.com

www.praxisholmed.com

www.nilisa-info.com

YouTube: www.youtube.com/channel/UCIRr_AiR5Ar8h5OrYecz_VQ

Our contacts: Tel.: +49 176 40596300, e-mail: academy-holmed@web.de



Foreword

Microcosm Man

Due to the understanding of the dimensions in different cultural epochs and the resulting **TEACHINGS**, the structure of the human being was subdivided as spirit-soul-body. The basic principle of **IMPERISH ABILITY** can be found in the Indian Vedas, the Slavic Vedas, in the Rosicrucians of the Middle Ages, in theosophy, in anthroposophy and many other religious groups. The golden thread in all cosmological teachings describes this as the **ABSOLUTE** or **GOD**, who has projected Himself as '**HIS EARTH IMAGE**' into the ever-denser layers of being or 'sheaths' developed by Himself. Thus, its fine energetic principle has manifested itself in the **FORM**, which we can recognize as the human form of appearance — the body.

The densest of these bodies, the material body is surrounded by the fine energetic bodies. The 'energybody' (etheric body) surrounds the material body, followed by an emotional body (astral body), which in turn is surrounded by a mental body. (see Matryoshkas, page 27). These fine energetic bodies belong to the 'soul' world, over which the 'spirit' watches. In the Indian representations it is **ATMAN**, which in the theosophical teachings is further subdivided into 3 other dimensions in this realm: **ATMA-BUDHI-MANAS**. We also use this representation in our table of the **S-S-M (Spiritual-Somatic-Medicine)**, page 478.

The interconnectedness of all these dimensions is **non-linear**, like everything in the Universe, except the denser linear structures. **We will go into these particularities in detail in the second volume of our work.**

In our modern world, where 'science' has taken priority in most areas, we tend to define these dimensions 'scientifically'. It is supposed to be compatible and plausible-mentally corresponding to today's materially structured brains that submit to pure material logic.

It is a fact that brilliant scientists believed in the divine origin of the Universe at the end of their research or their lives, such as Albert Einstein and Max Plank.

The genius researcher and inventor Nikola Tesla has publicly admitted that his projects and the structure of his inventions were given to him by 'extraterrestrials'.

Thus, today we have the 12 dimensions of Burkhard Heim in his theory of existing dimensions, the 8 dimensions of G. Shipov and A. Akimov in their 'Torsion Field theory' or the definition as 'Morphogenetic field' of Rupert Sheldrake, etc.

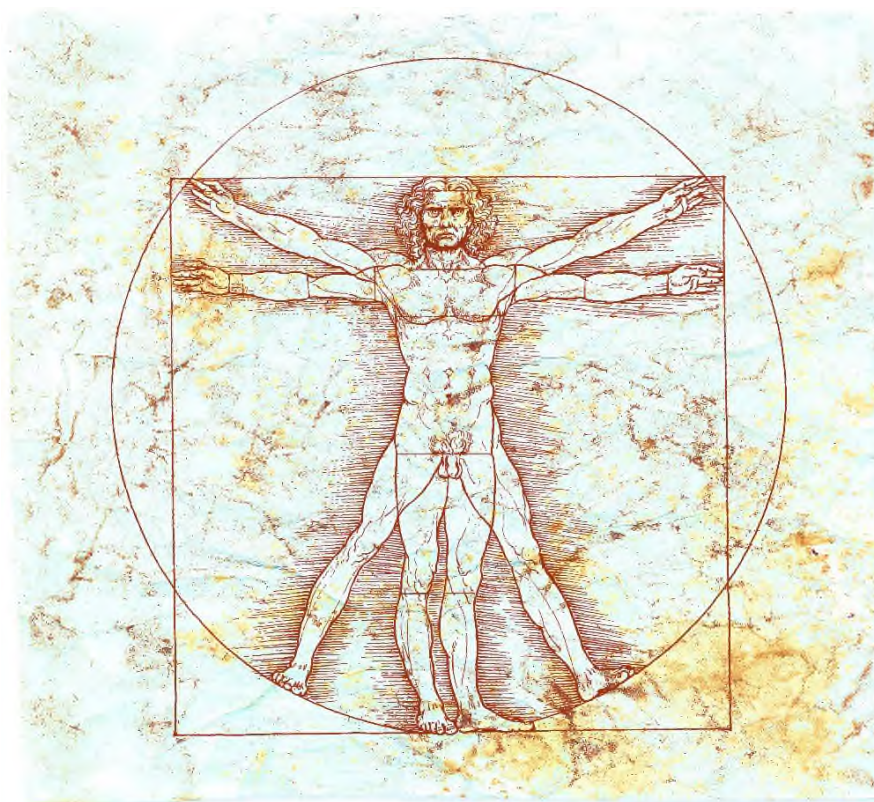
In principle, there is one fact to note: all these ingenious people have grasped to formulate it 'scientifically' **after they had recognized the priority of the 'Divine principle'**.

The question arises why, instead of using the original term 'Akashic Chronicle', one now speaks of a 'morphogenetic field'. Is it the expression of an individual who has defined it 'scientifically' for himself to possibly compromise with modernity?



We do not have to reinvent the wheel. Our table of Spiritual-Somatic medicine on page 478 can therefore only reflect the true dimensions of the human being to a limited extent, according to the description available to us from the classical writings. It all has to be looked at as an allegory that leads to the truth, but it is never the truth itself. With the help of this table, we can explain to every modern person the origin and the course of pathogenic processes, although it is basically only an auxiliary table. The fact is, however, that after the discovery and formulation of the Global Scaling Theory by H. Müller, it has finally been possible for the first time in human history to understand why we as humans have this special body temperature, why our hands have such a structure, why energization over distance is possible without 'non-linear systems', why healers can effectively perform distance treatments and much more. One of the most important facts is that we now know, through the Global Scaling Theory, that it **IS THE PROTONS' OWN FORCES THAT MAKE ALL MATERIAL PROCESSES IN THE UNIVERSE.**

From this it can be deduced or concluded that **no matter exists without a spiritual principle and that the spirit also possesses a kind of matter.** In reality the separation of Mind-Soul-Body is nothing but a theoretical concept. From our point of view the term 'immaterial processes (e.g. information)' is just an 'inaccurate' term. However, we'll also use this term in our book because it is rooted in the ideas and definitions that exist in society to express a certain state of affairs. From the point of view of cosmic reality, however, we come closer to the truth with the term 'subtle'.



Leonardo da Vinci - Perfect Man- [1]

The authors wish you much success in your practical work with the NON-LINEAR system NILISA Advanced®.



Table of content

Part I - Theory of working with a non-linear system	Page:016
Introduction and general overview	Page: 017
Social development processes.....	Page: 018
What is the current, actual situation in the health care system?.....	Page: 020
What is the situation in medical research?	Page: 022
Energy-information medicine.....	Page: 023
Alternative, Complementary or Holistic medicine?.....	Page: 024
Concept of the spiritual-somatic medicine	Page: 026
The disease of a physical body — restoration of balance or harmony of the higher structures	Page: 029
Development of social systems: examination from the positions of the holographic effect	Page: 031
The problem with 'objective measurement'.....	Page: 034
The object of measurement, the measured object.....	Page: 035
Animate objects.....	Page: 035
Unanimate objects.....	Page: 036
The 'Personal Profile'	Page: 040
The first measurement is valid.....	Page: 041
History of the development of non-linear system analysis / diagnostic systems....	Page: 044
Important comprehension modules for understanding NON-LINEAR systems (Global Scaling)..	Page: 046
Where do resonances arise in our body?.....	Page: 051
Part II - The practical application of the system — 3 ways	Page:055
Tools, ideas and case studies for daily practical work.....	Page: 056
The input image after starting the software NILISA Advanced®	Page: 056
Basic settings for the specialists.....	Page: 057
The 'Reception' module — creating a new patient	Page: 059
Creating a photo of the client in the 'RECEPTION' module.....	Page: 061
The 'Examination' module'.....	Page: 063
Part II - Chapter 1 - Paragraph 1 — The way of the applicant	Page: 064
Startingtheexaminationprocess.....	Page: 066
The examination process is completed — start the metatherapy.....	Page: 068



Part II - Chapter 1 - Paragraph 2 — The way of the specialist	Page: 070
The menu item 'CONFIGURATION' — Creating a measurement profile	Page: 072
Which objects together most effectively represent the human system?.....	Page: 073
Start the measurement process using the 'START' button.....	Page: 080
Frequencytable I – M – A – G – O	Page: 082
The body's own tissue frequencies and their standard frequency spectra in NILISA Advanced®	Page: 083
.....	
The spectralpattern.....	Page: 084
The spectral (pattern)curves	Page: 085
The red and blue curves (spectral curves) and their (extended) interpretation.....	Page: 086
Measuredobjectcurves.....	Page: 087
Straight lines with isoline (general)	Page: 088
Specificpatterncurves - acute, subacute, chronic.....	Page: 088
Advanced curves interpretation:.....	Page: 093
Etalon 'Cardiac arrhythmia'.....	Page: 094
Object and measured curves in direct comparison - Interpretation of an etalon curve.....	Page: 095
.....	
Interpretation of a pattern curve (stomach) under the aspect of frequencies.....	Page: 096
Expert system No. 2 — entropy points.....	Page: 101
The extended view to the entropy points (2nd expert system).....	Page: 102
The 'Examination' module–Absolute Model and the red dots ('passed').....	Page: 104
The 'Analysis' module.....	Page: 105
Marking an entire area for evaluation with a MANUAL NIDUS LOCALIZATION button.....	Page: 107
.....	
The 6 phase model with the effects of a focal load on the tonsils (according to Dr. Reckeweg).....	Page: 108
Special objects for nidus diagnostics	Page: 110
The 'TEST' module.....	Page: 114
The 5 aspects of objects examination.....	Page: 115
Reliability (limits) and thecoefficientstable	Page: 116
The red dots, the numerical values and their reliability and the 'Absolute model' ..	Page: 117
The process and the co-processes involved in it (the etalons of the registers).....	Page: 117
Collection of data in the NOTES – theregisters C# - E# and A#	Page: 118
The 'VIEW NOTES' module – Evaluate Data collection	Page: 119
The 'ENTROPY ANALYSIS' module (NEW FORMAT)	Page: 120



The 7 levels and their importance in the entropy analysis	Page: 121
Cell renewal of organs - an overview	Page: 124
The 7 levels - a worktool for presenting pathophysiology	Page: 125
The 'Spectrum'– a worktool for accurate viewing of the pattern.....	Page: 127
The 'ENTROPY ANALYSIS' module and the Intendance Screening I (= Supervisor / Control Center)	Page: 128
NLS (non-linear system) ANALYSIS and its application	Page: 130
Evaluation of laboratory parameters (register group B#).....	Page: 130
Register group C# ->Carcinomas and Register group Homeopathics.....	Page: 131
Consideration of the laboratory parameter 'blood sugar'.....	Page: 131
The 'TEST' module — the 'toolbox' of the specialist for finding causes.....	Page: 134
The modules 'VEGETOTEST' (internal) and 'VEGETOTEST' (free).....	Page: 135
The 'COMPARATIVE ANALYSIS' module.....	Page: 136
The 4-phase model according to Dr. Selye	Page: 137
Interpretation of the register group 'Exogenous factors'.....	Page: 139
Functional test of the autonomic nervous system (Object and Etalone).....	Page: 140
In search of the cause	Page: 143
Lyme disease	Page: 144
Vegetotest with the register group 'Homeopathy'.....	Page: 145
The 'FREQUENCY TRANSFER' module - the tool for transferring information to a carrier	Page: 147
Transfer of the'virtual model' (Vmod) to a matrix.....	Page: 148
The 'ELIMINATION' worktool — finding hidden processes.....	Page: 149
The buttons 'DYNAMICS GENERAL' / 'DYNAMICS INDIVIDUAL'	Page: 149
The 'AUTOSCAN' worktool – little brother of the NLS-ANALYSIS.....	Page: 150
The 'ABSOLUTE MODEL' vs. 'IMPERATIVE MODEL' worktools.....	Page: 151
The REGISTERS (pgroups) – file folders of the etalone for cause search..	Page: 152
The 'VIRTUAL MODEL' — Result of the calculations of the MODELS..	Page: 153
Transmission of the result ->Frequency transfer / Vegetotest.....	Page: 153
The 'AURA' module.....	Page: 154
The 'VIEW NOTES' module and the 3 possibilities of reports.....	Page: 157
The Advanced Report.....	Page: 159
The 'EXAMINATION' module and the 'METATHERAPY' worktool (manual).....	Page: 159



THE EXAMINATION EXAMPLE	Page: 161
Follow the way of the specialist	Page: 161
The 'Examination' module	Page: 163
The 'Analysis' module	Page: 166
The 'Test' module	Page: 168
The Absolute Model	Page: 169
The Entropy analysis	Page: 170
The object 'Nervus Vagus'	Page: 172
The Comparative analysis	Page: 173
Papillomavirus as an object	Page: 176
Metatherapy	Page: 177
The Comparative analysis	Page: 178
Register group Allopathy	Page: 179
Register group Allergy	Page: 180
Register group Homeopathy	Page: 180
The 'Virtual model'	Page: 181
Frequency transfer - Modulating of vibrations	Page: 182
Register group P5 Current emotional quality	Page: 182
Register group F3 Geopathogenic loads	Page: 183
Register group J# Food intolerance	Page: 183
Register group SW Spectral Wave Pathogenesis	Page: 184
Register group N1 Vegetative system loads	Page: 184
Register groups N3 / N4 Stabilization I and II	Page: 185
The 'ANALYSIS' module —the 'Heart muscle cross incision'	Page: 186
The 'SPECTRUM' module	Page: 187
The 'ENTROPY ANALYSIS' module – under the aspect of Vmod (Virtual Model)	Page: 188
The 'TEST' module and the 'AUTOSCAN' function	Page: 190
in relation to the 'Heart muscle cell' object	Page: 192
and the 'Metatherapy' worktool	Page: 194
The 'Examination' module and the 'Metatherapy' worktool	Page: 195
Part II – Chapter 1 – Paragraph 3 — The way of the professional	Page: 197
Relevant questions for a professional	Page: 198
The objects of the guide for a structured analysis	Page: 199



The 5 components of a structured analysis	Page: 200
The (Yin) principles of Chinese medicine — the 5 elements	Page: 200
The Earth element (Stomach – Spleen/Pancreas)	Page: 201
The Metal element (Lungs – Large intestine)	Page: 203
The Water element (Kidney- Bladder)	Page: 205
The Wood element (Liver – Gall bladder)	Page: 208
The Fireelement (Heart – Small intestine # 3E (3W) – Blood circulation/Sexuality)	Page: 210
Special features of the 3E (3W) meridian (Triple warmer).....	Page: 212
Overview of the time of day of organs maximum/minimum activity.....	Page: 212
3 energy circuits of energy-conducting paths.....	Page: 213
The 6 layers of the meridians and their significance for the disease:.....	Page: 215
Summary of what has been described so far in the energy cycle.....	Page: 218
TYPES OF CONSTITUTION from the point of view of TEM and TCM	Page: 221
The 5 basic pathogenetic samples (patterns) according to Dr. Schimmel	Page: 222
Pathogenetic sample #1.....	Page: 223
Pathogenetic sample #2.....	Page: 224
Pathogenetic sample #3.....	Page: 225
Pathogenetic sample #4.....	Page: 226
Pathogenetic sample #5.....	Page: 227
The cotyledons and the structures of the human body formed from them	Page: 229
The frequency of organs and structures in NLS-Analysis (table)	Page: 230
Synergistic interactions based on the alchemical — spagyric way of thinking	Page: 231
An example of the application of the 5 components in daily work	Page: 232
Follow the way of the professional	Page: 234
The way of the structured analysis.....	Page: 235
Gain a generaloverview.....	Page: 236
Overall summary extended vision spectral pattern.....	Page: 237
Structured data collection and analysis.....	Page: 243



Working out an overview with the help of the 'Notes'.....	Page: 244
Short version on the topic of TCM (repetition).....	Page: 254
Evaluation of the 'Notes' (graphical representation)	Page: 257
Review of the 'found' organs (liver - large intestine).....	Page: 258
Manual deep scan of the liver.....	Page: 259
Manual deep scan of the large intestine.....	Page: 263
The 'TEST' Module – Register A# with explanation of the frequencies.....	Page: 264
.....	
Summarize the TEST-results of liver and large intestine.....	Page: 271
Symptomatic testing of the posterior wall of the stomach with the nidus testing.....	Page: 272
.....	
Excursus to spectral samples (patterns) for professionals.....	Page: 275
Summary of spectral patterns which have been found so far.....	Page: 277
Analysis of the object 'Stomach posterior wall'.....	Page: 278
The vegetative system — Testing-Results-Assessment.....	Page: 279
The evaluation of the test results of the 'Vegetotest'.....	Page: 280
Analysis of the lymphatic system — what loads are there?.....	Page: 283
Analysis of the brain with deepscan — vessels up to ATP.....	Page: 285
Deep scan over Regions+ Labels - Coarse -> Fine.....	Page: 288
Blood cells and loads — various registers.....	Page: 289
Analysis of the cell membrane = docking location with the emotions.....	Page: 306
.....	
Register group Psychomodules.....	Page: 307
Register group Q-Models.....	Page: 308
The 'FREQUENCY TRANSFER' Module — the truth 'behind' this module.....	Page: 312
.....	
Metatherapy from the fine (deep) back to the coarse.....	Page: 313
ATP -> Mitochondrium -> Endothelial cell ->Vessels.....	Page: 315
Metatherapy - Automatic correction X2 (2x) as a conclusion.....	Page: 319
Summary of the way of the professional.....	Page: 320
Part II – Chapter 2 – Paragraph 1 - the special topics in the NLS-Analysis.....	Page: 322
Paragraph 1 – Application for the analysis of Micropoints/Microscan.....	Page: 323
Paragraph 2 – Detecting and evaluating regulatory disorders.....	Page: 329
Paragraph 3 – Intensine-Brain connection (acc. to Prof. Dr. Gregor Hasler).....	Page: 334
Paragraph 4 – Allergy process - an attempt at a holistic view.....	Page: 349



	Acid-base balance - Basic information.....	Page: 363
Paragraph 5	– Correct handling of the psychomodules	Page: 366
Paragraph 6	– The human energetic system in the NLS	Page: 377
	Tabular overview Chakras-Meridians-Microbes.....	Page: 384
Paragraph 7	– The Endocrine system.....	Page: 387
Paragraph 8	– Correct handling of laboratory parameters	Page: 392
Paragraph 9	– Special functions of the software programme.....	Page: 400
Paragraph 10	– Evaluation of measurement results - the possibilities.....	Page: 405
Paragraph 11	– Collection of thoughts — Inspirations.....	Page: 406
Part III	The Atlas - selected examples and overviews.....	Page: 408
	Organopreparations.....	Page: 410
	Body incisions — physiological spectral patterns.....	Page: 418
	Pathophysiology.....	Page: 424
	Microorganisms.....	Page: 438
	Object 'Hypothalamus' with description.....	Page: 454
	Object 'Cranial nerve nuclei from behind' with description.....	Page: 455
	Headaches - from the point of view of TCM – the principle of the elements.....	Page: 456
	Overview of the 6-phase model by Dr. Reckeweg	Page: 457
	Overview and description of the individual laboratory parameters.....	Page: 458
	Overview of functional embryonic development phases.....	Page: 474
	Graphic Basic concept of spiritual-somatic medicine.....	Page: 478
	Selected notes on microorganisms.....	Page: 483
	References and notes to the literature.....	Page: 485



Disclaimer

The data and information contained in this manual have been prepared by the authors to the best of their knowledge and checked with the greatest care. Nevertheless, errors cannot be excluded. A guarantee and warranty for the correctness, completeness and topicality of the content can therefore not be assumed. Thus, the authors are not liable for damages of any kind caused by own incorrect use as well as by incorrect and incomplete information. Any legal claims and claims for damages are therefore excluded. Likewise, the authors do not assume any guarantee or liability for failure to achieve success. The responsibility and risk in implementing the information provided lies solely with the reader or user.

Furthermore, the authors do not make any promise of healing and do not promise or guarantee any improvement or alleviation of a disease by applying the analysis and correction methods presented in this manual. Nor does the information replace a consultation and examination with a doctor or alternative practitioner and must not be used for self-analysis and self-correction. Do not use the contents of this manual as your only source for health problems. Always consult a doctor or alternative practitioner in case of complaints.

Non-linear systems work exclusively in the information field of the human body. The information field of a person can represent or express the specific state of the entire organism. Depending on the behavior of the information field, one can only recognize through the application of a non-linear system how the energetic state of a person behaves.

Science and orthodox medicine do not recognize the existence of information fields, their medical and other significance and thus non-linear systems with their application due to a lack of scientific evidence in the sense of orthodox medicine. The values displayed in the software of non-linear systems (including entropy points and spectral lines) refer solely to the human information field and are not suitable or permissible for a diagnostic conclusion.

Since this method is only intended to detect the energetic vibration pattern of an organism, it does not replace necessary classical diagnostic procedures. A diagnosis may only be made by a doctor or alternative practitioner using the approved diagnostic methods and diagnostic equipment.



The modern '**Global Scaling Theory**', which was formulated within the framework of space research as the result of comprehensive research and mathematical analyses, proves these phenomena with the realization of universally valid regularities of our Universe. These regularities are the general active force behind all processes in our Universe. They are described with formulae but can neither be explained nor understood with a scientific paradigm that wants to attribute everything to a primacy of matter (materialistic scientific paradigm). *Interestingly a pictorial representation opens up a better 'understanding' for this than mathematical formulae.*

This pictorial representation is known as the 'fundamental fractal', which illustrates the dynamic processes of our Universe as complex events of overlaid vibrations according to harmonic laws.

By means of the biographies of great physicists, one can trace the process of knowledge that has fundamentally revolutionised the natural sciences since the last century. The path leads from Stefan Boltzmann, through Max Planck, Albert Einstein, Niels Bohr, Louis-Victor de Broglie, Norbert Wiener, Werner Heisenberg to the present day, in which more and more scientists of our time are establishing and embodying the new paradigm of physics, the

Primacy of mind over matter.

Whereas since *Newton* until the middle of the 19th century the primacy of matter had been assumed as an incontrovertible fact and it was concluded from this that all effects such as gravitation, magnetism, electricity and other energy fields are caused by and emanate from solid matter, today it is recognized and fundamental knowledge that the spirit, i.e. intelligent energy-information fields, are the cause and starting point of all phenomena in our Universe and that for every material particle there is also a subtle vibration associated with it as a complex vibration pattern. The term 'parallel worlds' of material and non-material matter was coined to describe this state of affairs. In answering the question of how much solid matter makes up in the cosmos as a whole, experiments within the framework of atomic, nuclear and particle physics have yielded the impressive result that our Universe consists almost exclusively of subtle energy-informative oscillation fields. This raises the question if social development processes are also determined by these universal laws.

Social development processes

The analysis of social development processes revealed that longer-term social and economic development stages are always triggered and determined by fundamental innovations, so-called basic innovations.

Cyclical processes are unmistakable. In the social and economic development to date, such developmental thrusts have been repeated at intervals of 40 to 60 years and have determined the subsequent time stages, which, according to the Russian scientist Nikolai D. Kondratiev, were called *Kondratiev's cycles*.

The decisive factor for the realization and thus effectiveness of these innovations and their developmental impact for the following period is the acquisition of the respective associated competence for the production and living area. The timely and correct recognition of the innovation that has an impact on the future determines the competitive advantage over the competitors and enables serious new value creation.

According to the German economic researcher and visionary scientist *Leo A. Nefiodow*, we are at the end of the fifth *Kondratiev's cycle*, which received its thrust from the basic innovation of information technology.

In retrospect, the previous cycles were determined by scientific and technological innovations: The invention of the steam engine initiated the *first Kondratiev's cycle*, followed by basic innovations in steel production for the *second Kondratiev's cycle*. The *third Kondratiev's cycle* owes its thrust to innovations in the fields of electrical engineering, electrochemistry and industrial chemistry, which

leads to the *fourth Kondratiev's cycle*, characterized by petrochemistry and industrial mass production in the automobile industry. The *fifth Kondratiev's cycle*, which is currently coming to an end, was characterized by computer science and information technology.

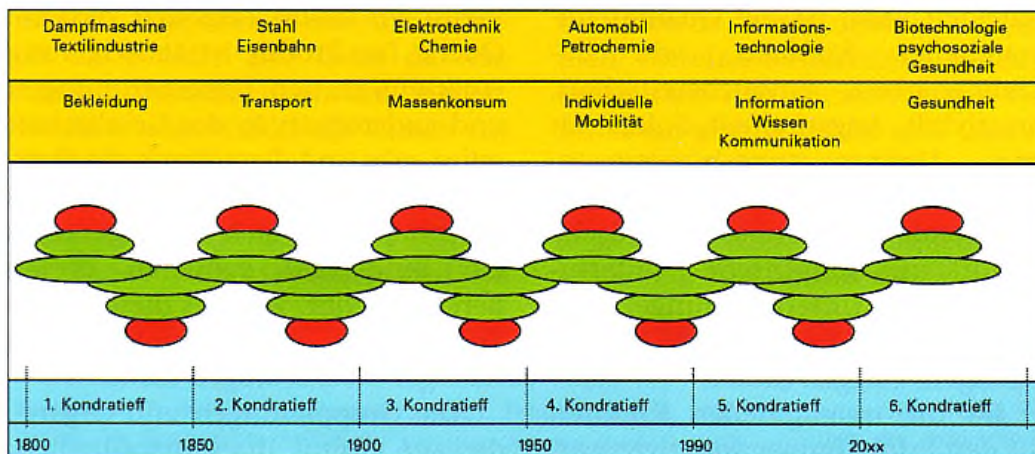
According to Nefiodow's prognostic assessment, and in the meantime also derivable from production structures that are initially still developing sporadically in various areas, but with increasing dynamic,

psychosocial health

represents the strongest innovation factor for the beginning *sixth Kondratiev's cycle*.

Thus, for the first time in history, an innovative force for the further development path of human society appears that does not lie in the technical sphere, i.e., does not lie outside the human being, but not only takes into account the human being himself in his complex totality as a biological and social being, but places him quasi at the center, as the decisive factor for further social development.

The following figure shows a schematic representation of these cycles, which are overlaid by other, shorter-term cycles.



Kondratiev's cycles, basic innovations and main fields of application

(from: M. Doerk, 'Wirtschaftswachstum durch Gesundheit und Lebenskompetenz', GZM-Praxis und Wissenschaft, 7. Jg. 4/2002, after Leo A. Nefiodow, 'Der sechste Kondratieff. Paths to Productivity and Full Employment in the Age of Information', Sankt Augustin, 2000).

If the course is now set in the direction of the following Kondratiev's cycle in conscious and consistent implementation of these findings, then, according to Leo Nefiodow, a sustainable optimization of the global economic situation can be expected in the coming years.

It must be realized that 'psychosocial health' is more than is expressed by the currently colloquial term of health. Health is more than the absence of illness. The **WHO** definition already takes this forward-looking idea into account.

But even this future-oriented definition still aims exclusively at describing the state of a human being in which he is when he can be described as healthy. To a certain extent, it is a definition directed inwards, towards the human being, which already takes into account and includes the factor and interdependencies acting from outside, but still includes a certain degree of passivity of the human being thus characterized.

Concept of the spiritual-somatic medicine

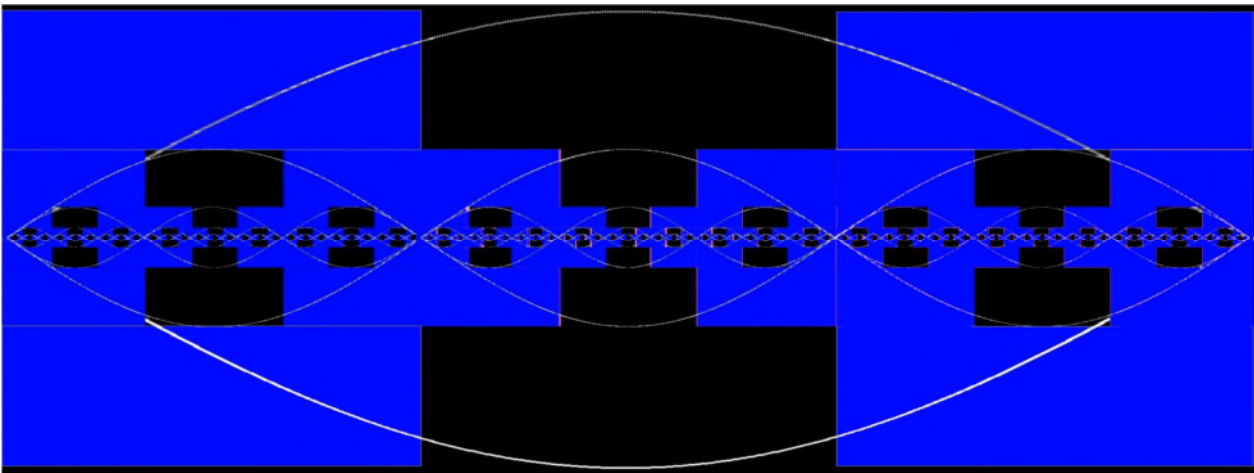
The human being is seen as energy-informational structure in view of the interrelation Spirit-Matter. The division is relative. There is no separate existence.

Any energy-informational substrate realizes both the spiritual and the material levels. In the consideration of the spirit the term 'level of consciousness' is used, in energy-informatics the 'entropy correlations' and in the dense material world it is chemistry and biology. Hartmut Müller's discovery of the natural phenomenon '**Global Scaling**' shows that the statistical distributions of results of measurements of real processes (physical, chemical, biochemical, biomorphological, demographic, economic and others) have a non-chaotic fine structure, which is not dependent on the type of process and which is stable for a large period of time. A common property of these structures is logarithmic hyperbolic scale invariance (**scaling**).

Simon E. Shnoll discovered process-independent logarithmic hyperbolic scale invariance of the fine structure of histograms in physical and chemical processes, including in radioactive decay and thermal noise. All processes were synchronous and independent of the distance.

The physical model 'Global Scaling' assumes that the natural oscillations of matter at the level of the physical vacuum are the cause of the scale invariance.

The natural oscillations form logarithmic spectra and logarithmic-fractal distribution of matter. The atom consists of over 99 percent of its mass of protons, so that the proton resonances (natural oscillations of the protons) determine the course of all processes.



The primordial consciousness realizes itself through the field-resonance chain systems, whereby the entropy forces, following the thermodynamic laws, build up and break down the material conglomerates, the larger of which are subordinate to the smaller ones. This means that the weak fields, or weak forces, have the higher priority.

The weakest physical field - the gravitational field - can have a particularly thermodynamic effect. Unlike all other fields, the gravitational field is present throughout the Universe and is effective in all dimensions - from elementary particles to metagalaxies. As an extremely weak main background field, it does not directly participate in nuclear, chemical or biochemical processes, but mediates their effect through the entropic information channel.



The supporting (distributing) force of this information is the **global standing vacuum wave with its nodes (attractors of matter) and gaps (the displacement of matter by amplitude in the belly of the standing wave)**. The denser the structure, the more fast-moving it is, in contrast to its own fine structure. The final goal arises on the fine energetic level during the process of realization and is previously not known. The bricklayer is therefore only the executor of the realization process in the construction of the building.

The process limitation to dense morphological structures (e.g. 80-90 years), or even the search for causality on the level of electromagnetic forces, is thus limited in time and space (speed of light) and immediately calls into question — the wisdom of the entire Universe, — all founders of spiritual-religious directions and also sensitive-intuitive experiences of every human being.

***The conclusion from what has been said before is:
... 'we do have a global harmonic distribution of matter'.***

All natural processes, which for us are linear and thus random, acquire a clear regularity on the logarithmic level, which is represented by logarithmic straight lines of the scales. This regularity is conditioned by the standing wave processes in the vacuum, and therefore the Universe can be represented as a fractal chain system. Matter flows together in the nodes of the standing wave (the attractors).

This is where all optimal processes take place. All natural processes are based on mathematically calculable and programme-solved scales.



Matryoshka in matryoshka is only because of the space / 'hole' between them. Linear ratios are available here in terms of height, and in terms of volume, the ratios are logarithmic.

Quantum physics from these positions:

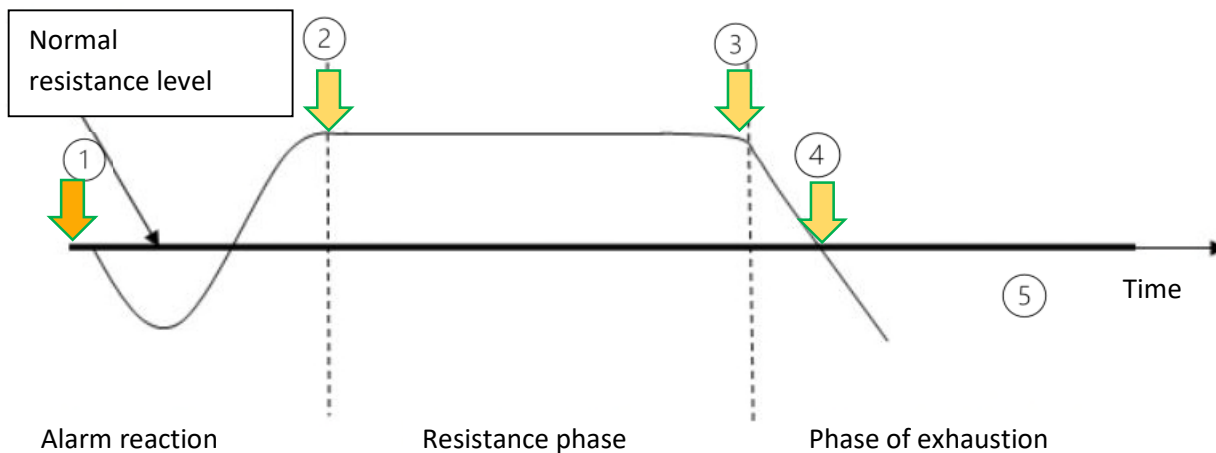
the **quantum** was 'born' due to the need for portioning, necessary for describing and tracing natural processes. Under the logarithmic–hyperbolic distribution of matter, with its antinodes or nodes (attractors of matter) and rarefactions or 'holes' (amplitude displacement of matter), prime numbers also fall, which leads us to substantiate similar patterns in the world of thought-form.

The logarithmic-hyperbolic distribution of matter with its nodes and gaps, is also observed in prime numbers, which leads us to the 'laws of the similar' and the 'world of thought-forms'.

Higher Consciousness teaches us: **'I have separated myself from myself in order to love myself'**.

The first measurement is valid.

The first measurement is the measurement with the correct result.



The number of 'identical' repetitive questions leads to a classic stress reaction in Selye! The more often we repeat the same question, the greater the inaccuracy of the answer!

The question about the reproducibility of the measurement method only proves the lack of expertise and technical knowledge of the questioner

While medicine has made groundbreaking progress in the treatment of acute illnesses, such as infectious diseases, over the last 100 years, the number of chronic diseases has risen inexorably. If one asks about the causes, one has to ask about the prevailing scientific paradigms of modern medicine. Paradigm means the theories and working methods considered valid at a particular time by a particular group of scientists. Medicine is dominated by a scientific world view that essentially bears the features of the old classical, mechanistic-deterministic world view of the 19th century, which is based on the model of classical physics of the turn of the century. From this, the causal-analytical method is currently the dominant paradigm in medicine. While physics has developed further and is today already at the transition to transmaterial physics, medicine remains stuck on the physical-chemical process thinking that has grown so successfully historically.

Kaucher writes in 1995: 'For about 1/3 of the diseases, materialistic medical principles remain more or less valid. But for 2/3 of the diseases completely new efficacies will be decisive, which can be repeated, measured and also mathematically-physically substantiated, so that also completely new branches of biophotonics of ether technology will arise...' and he writes further: 'The state of science is currently much further ahead of modern medical science and it seems as tragic when new scientific results are disputed with outdated scientific products or even put down as impossible'. We find these statements confirmed in concrete medical models. Virchow founded cellular pathology at the end of the last century, which is the basis of modern medicine. The Viennese histologist Pischinger pointed out that this concept of cell, coined by Virchow, is an abstraction, since the cell is not viable without the milieu surrounding it. He therefore created the term cell-milieu system (Alfred Pischinger 1990).



The 3 Ways for the Good of the Whole!

Tools, ideas and case studies for daily practical work

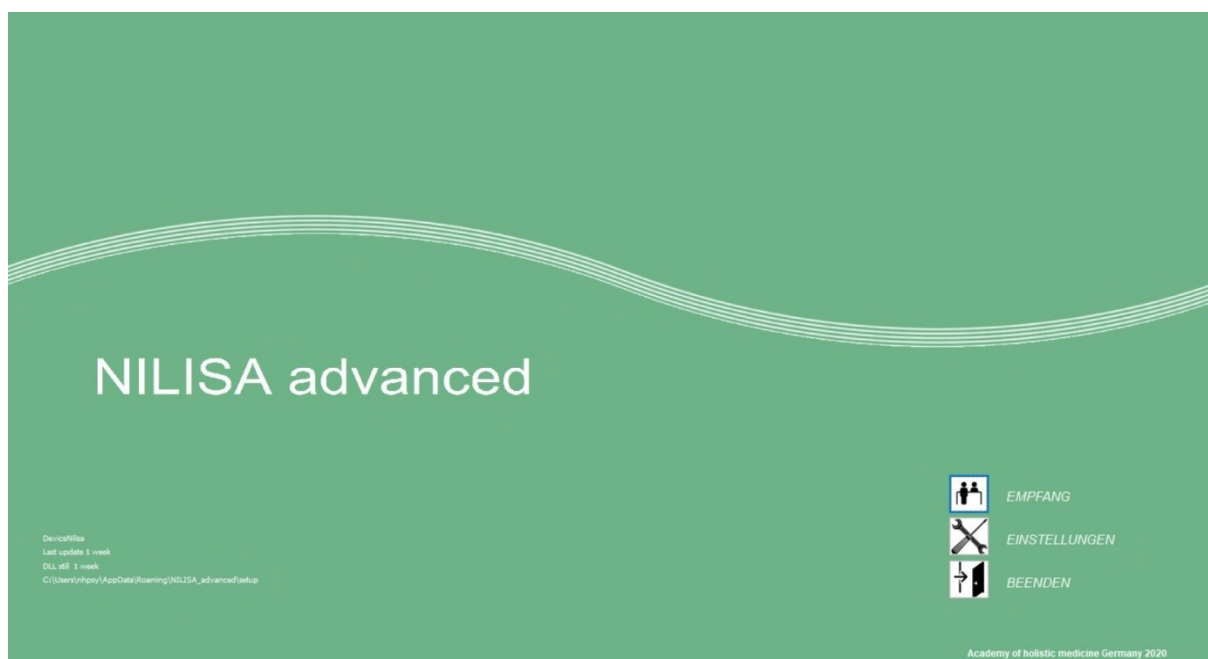
Congratulations on your purchase of the NON-LINEAR system NILISA Advanced®. It is one of several NON-LINEAR systems on the market. The Institute of Applied Psychophysics (IPP) in Omsk (Russia) has developed this new technique for analyzing the human bioenergy field — non-linear diagnostics, also abbreviated NLS. The Russian academic Svyatoslav Pavlovich Nesterov developed the first NLS-analyzer in 1988. These first devices were clinically tested in Russia from 1990 to 1995, and by the end of the 1990s, the production of non-linear systems increased by leaps and bounds. The market share of these devices is currently more than 20% of the world market for quantum and wave technology for medical purposes. The core of all non-linear systems on the market is the Metapathia software developed at that time. Each company has built its own user software around it. Hardly any of the developers and programmers of that time are still alive today. This is the reason why it is so difficult to make changes to the handling of the software and why it sometimes seems a bit antiquated. Nevertheless, these systems provide us with good insights into the energetic state of a living being (human — dog — horse etc.). We can use these systems for analysis as well as for energetic correction.

Let's start with the basics. There are 3 ways to work with these systems. We refer to these 3 ways as:

1. **The way of the applicant — paragraph 1,**
2. **The way of the specialist — paragraph 2,**
3. **The way of the expert (professional) — paragraph 3.**

They are all united by the first steps in using the software. Now we would like to describe these steps.

The input image after starting the software NILISA Advanced®





NILISA advanced

Device: Nilisa
Last update: 1 day
DLL still: 1 hour
C:\Users\rhpsy\AppData\Roaming\NILISA_advanced\setup



EMPFANG

EINSTELLUNGEN

BEENDEN

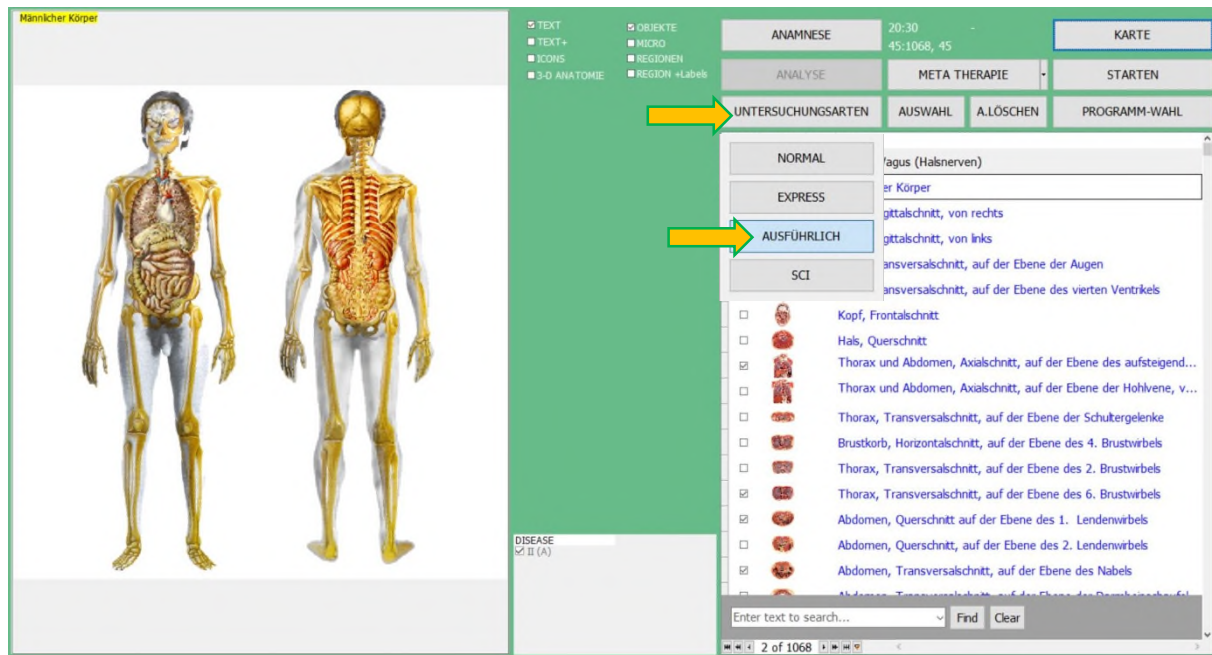
Academy of holistic medicine Germany 2020

Part II - Chapter 1 - Paragraph 1

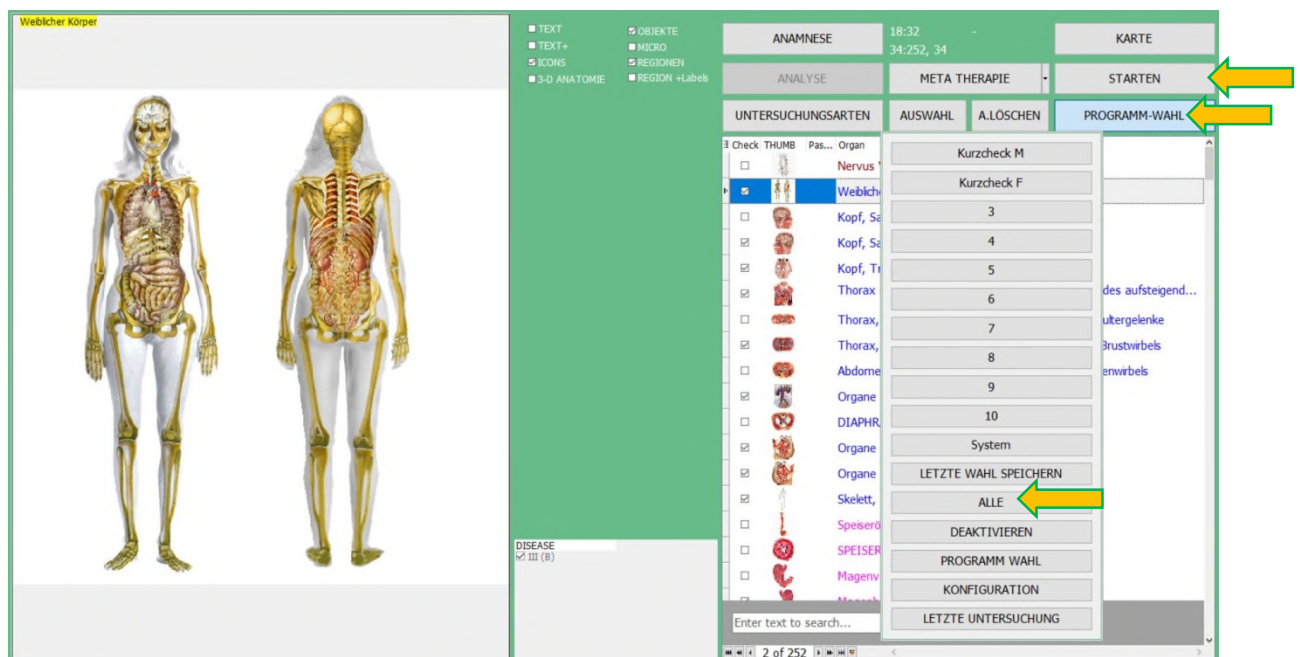
THE WAY OF THE APPLICANT



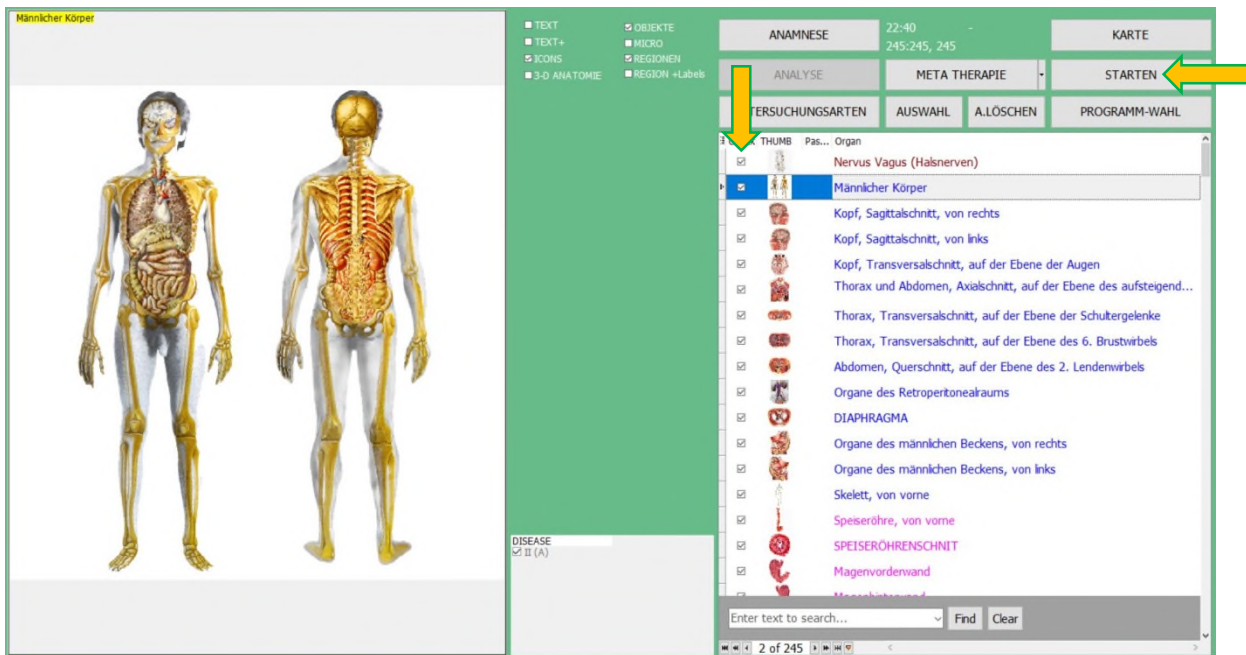
Paragraph 1: THE WAY OF THE APPLICANT



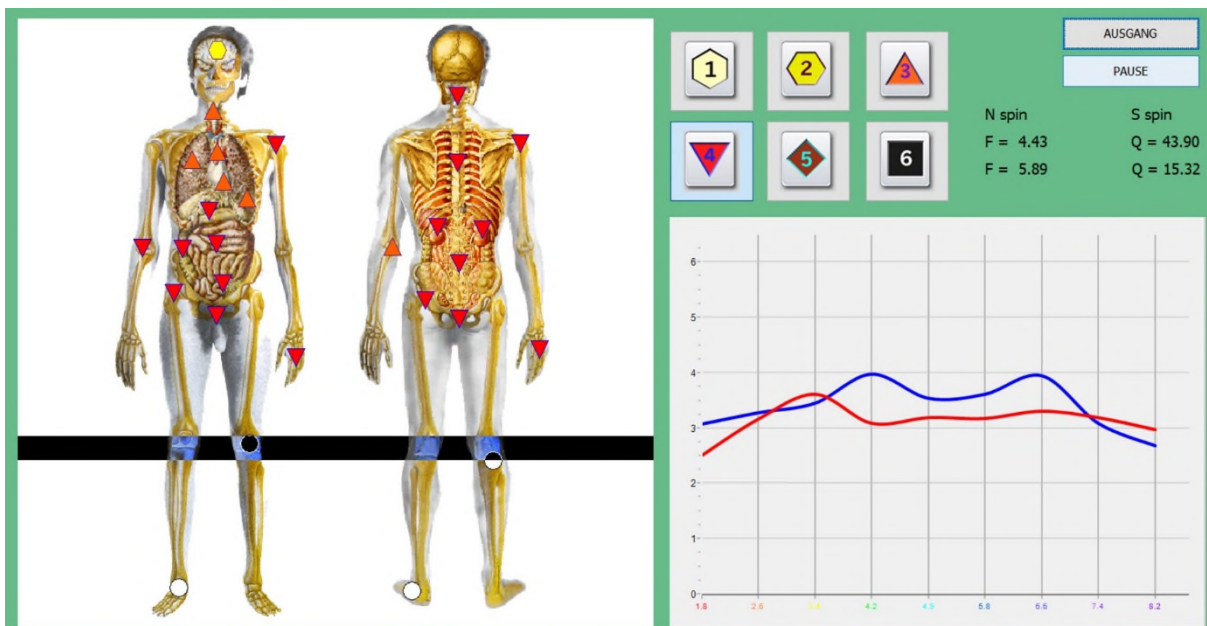
Especially as a beginner, you should explore and get to know the software via these first three possibilities of the types of examination. You will notice that you are initially irritated by the abundance of information rather than that you get a clear, structured picture. [What you have indicated in the anamnesis leads to a preliminary selection of the objects to be examined. At this point, you will already find marks in the white boxes in front of the objects, which indicates their activation. However, this does not apply to all available objects that you have selected via 'Examination types', but only to a certain preset selection]. To activate **all objects**, you now have to press the **PROGRAM SELECTION** button. This **PULL-DOWN** menu opens, so click the **ALL** button to activate all objects available in this type of examination. Now press the **START** button to begin the examination, the scanning process.



Starting the examination process



After you have marked all objects, start the scan using the **'START'** button. The scanning process starts and you will see for each object how it is evaluated firstly with the **first expert system** (spectral lines) and then with the **second expert system** (entropy estimation points).



The **first expert system** evaluates the human bioenergy field from the aspect of **YIN (structure = N spin) = blue line** and **YANG (function = S spin) = red line**.

The **second expert system** evaluates the bioenergy field of man from the aspect of the **regulatory ability of the corresponding structure (object)**. The so-called entropy points are important here. These bear the designation **1 – 2 – 3 – 4 – 5 – 6** and, like school grades, they have a corresponding expressiveness.



NILISA advanced

Device: Nilisa
Last update: 1 day
DLL still: 1 hour
C:\Users\hpsy\AppData\Roaming\NILISA_advanced\setup



EMPFANG



EINSTELLUNGEN



BEENDEN

Academy of holistic medicine Germany 2020






Part II - Chapter 1 - Paragraph 2

THE WAY OF THE SPECIALIST



In principle, **12 to 20** etalons are sufficient to get a first impression. Here you will find the most important information and where you should also look. The decisive factor is not the amount of measured objects, but what information you can gain from these objects via the **'TEST' module**. This is the focus of **work for specialists and professionals**. (With anamnesis, testing and therapy, you should be ready within an hour during operation, in complicated cases in 1.5 hours). **'The truth is always simple'** and in therapy the principle **'less is more'** also applies.

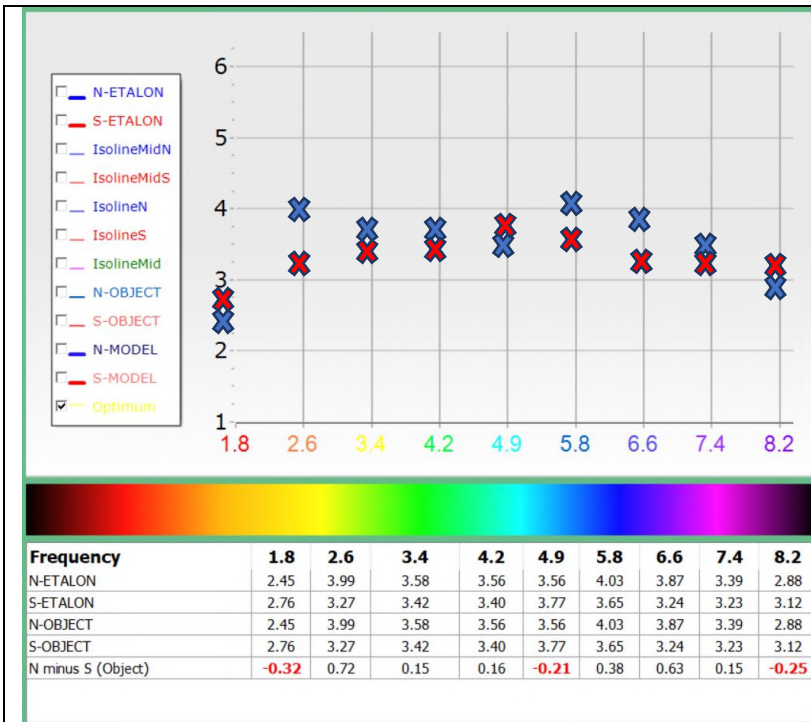
Which objects together most effectively represent the human system?

 <p>General Overview</p>	<p>General overview (Male / Female Body). Is ideal to get a first, rough overview of the overall situation of the patient.</p> <p>Register groups for first hints - select via 'ABSOLUTE MODEL' (p. 143):</p> <ol style="list-style-type: none"> 1. SW Spectral Wave Pathogenesis, 2. P1 Psychoemotional sensitivities, 3. F1 HAIR ANALYSIS - Indication of the general status quo of trace elements, 4. Physiotherapy (register PM), 5. <i>Activate Chakras S1 – S2 – S3 – S4 – S5 – S6 – S7 – all at the same time</i> 6. <i>Meridian overview- and / or Meridians (registers V1 and V2)</i> 	
 <p>Head incision sagittal left</p>	<p>The object Head incision sagittal left (if necessary, you can also examine right) Here we find mainly infections of the upper respiratory tract.</p> <p>By activating the 'Icons' we get, among other things, access to the tonsillapalatina</p> <p>In case of suspected nidus of the disease, please also test pharyngeal tonsil and palatine tonsil – these 3 objects of lymphoid tissue are often the foci of lesions and need to be examined in more detail.</p>	
 <p>Head incision frontal</p>	 <p>Head incision transversal 4. V.</p>	<p>The objects Head incision frontal and Head incision transversal at the level of the 4th ventricle give you a very good overview of a possible accommodation of the head area. They perfectly complement the sagittal section.</p> <p>Especially the transversal incision allows us to see hidden foci in the area of the Osmastoidea and also to treat them via focus testing. In addition, you can see the ear tubes (<i>Tubauditiva</i>), which can often be heavily weighed down in children.</p>
 <p>Thorax frontal incision - aorta</p>	<p>The object Thorax frontal incision at the level of the aorta provides you with a quick view of the status quo of the lungs and the heart, also of the epigastric organs: liver, bile, stomach wall, colon, diaphragm, but also thyroid and trachea.</p> <p>Firstly, you can directly control the relevant organs and test them by activating 'Icons', and secondly, you can directly test the corresponding entropy points in the 'ANALYSIS' module by localizing the nidus and evaluate them in the 'TEST' module.</p>	



The spectral curves or pattern curves and their interpretation (the SPECTRUM) in detail.

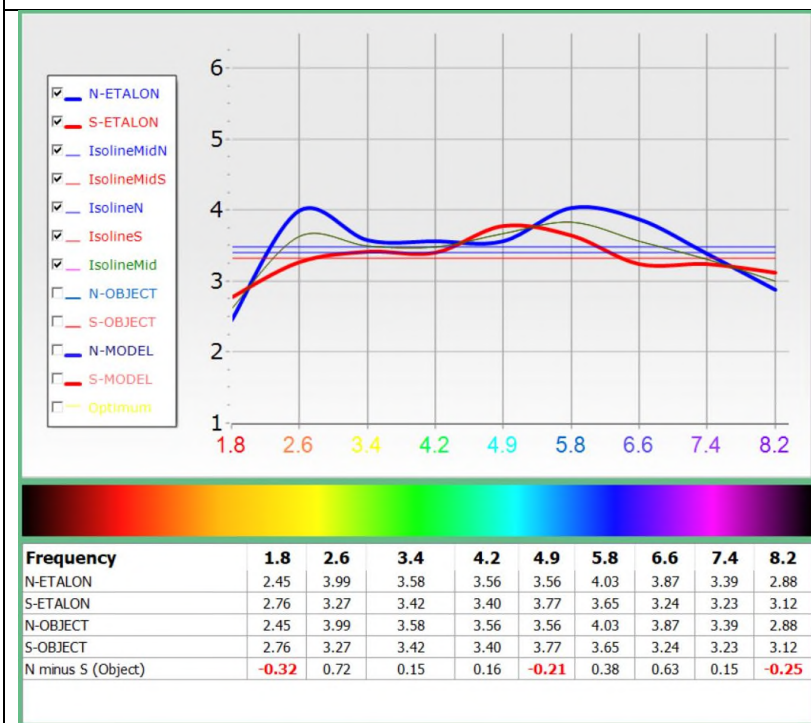
While the measurement of the human bioenergy field is underway, we can already look at the curves shown and get a first impression of where and what kind of energetic disorders the patient has. For this, however, it is necessary that we deal with the meaning of these curves in more detailed. But first, let's take a closer look at the history of the origin of these curves.



These curves are optical representations of a total of **18 measuring points**, which were tested manually using the biolocation framework at the beginning of the development of the NLS-tests.

The values found were plotted on a raster/grid (today's spectrum) as individual points and then connected to lines for better visibility. Over time, these rather 'angular' lines turned into beautiful curved lines (but this is only for visual representation).

The values found by the measurement are and remain decisive. These can still be found today **under** the spectral image in a tabular listing.



Visually, these curves are more appealing to the eye.

In addition, the curves were supplemented by the so-called isolines.

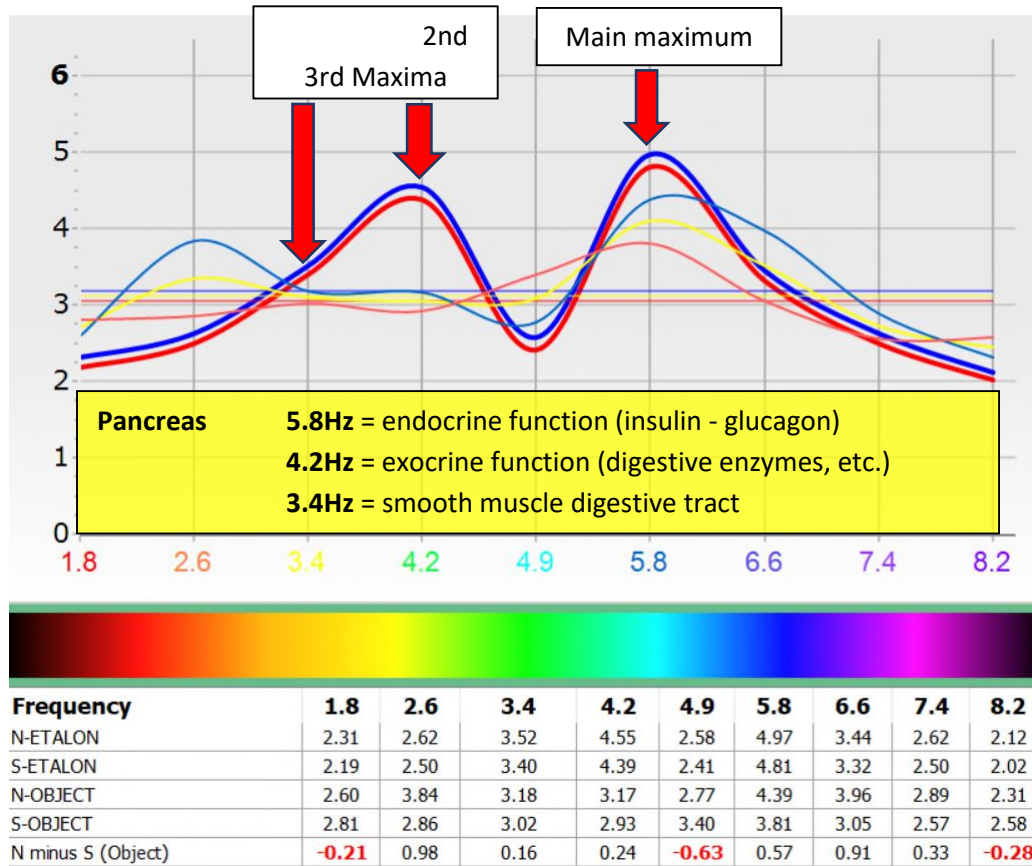
The **thin green isoline** between the blue and red curves represents the mathematical mean between the north and south values of the corresponding frequency.

The straight isolines (blue and red) represent the corresponding average value of all north and south points, respectively. From both isolines, an average value is then additionally calculated and displayed (as a straight yellow line). This line is located between the blue and red lines.



Advanced curves interpretation:

1. Let us consider **physiological tissue curves** at the organ level – the **main maximum** and the **2nd / 3rd secondary maxima** are important (here spectral pattern of pancreas).



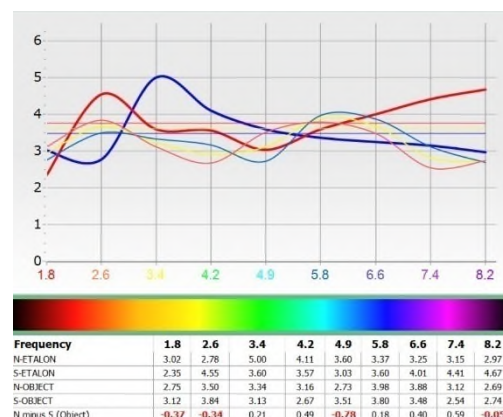
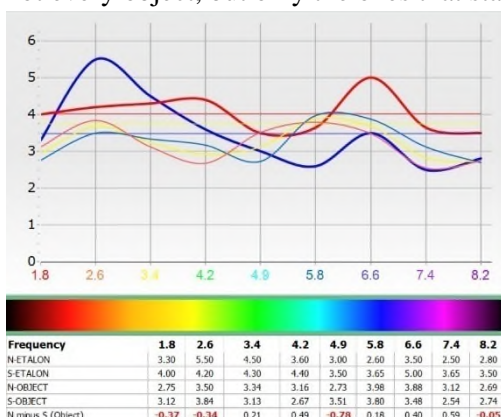
2. Which deviations of the **measured curve** (spectral lines) can be detected at the **maxima** for the **optimal tissue frequency**?

-> Which curve (blue / red) deviates most clearly?

(Blue at 1,8 / 2,6 / **4,2** / 5,8 / 6,6 / 7,4 / 8,2) (Red at 1,8 / 2,6 / **4,2** / 4,9 / 5,8 / 6,6 / 8,2)

-> or Where do both curves deviate together? (Blue and red at 1,8 / 2,6 / **4,2** / 5,8 / 6,6 / 8,2)

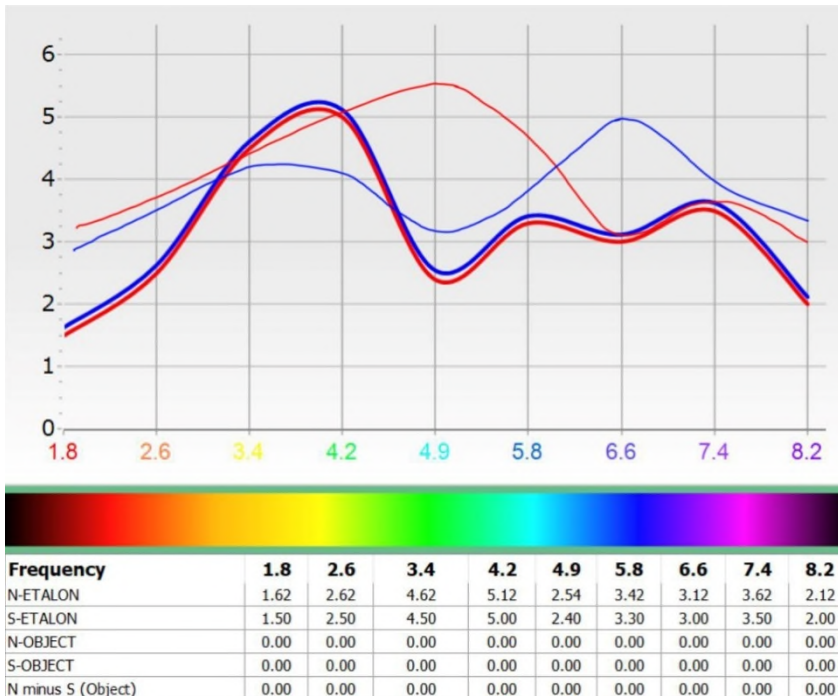
Here we can see to what extent the **measured object** deviates from the **physiological spectral image**. At this point, we can judge for ourselves which structures within the organ are disturbed and which remote effects or links exist with this process. In a further step, we assess the measured object with etalons of groups C and E. Describe not every object, but only the ones that stand out!





Object and measured curves in direct comparison- Interpretation of an etalon curve

here: the physiological pattern of the stomach in relation to the measured curves of the patient



How do we arrive at this view?

From the tested object

-> about „TEST“

-> A# Organ relations

-> Ventriculus (stomach) ->

Range

What is compared with each other?

Physiological tissue
(Thick blue and red curve)

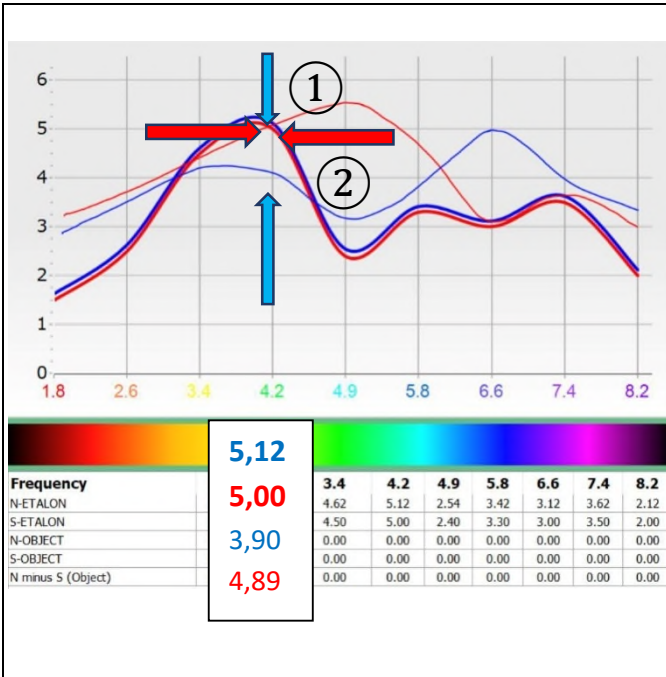
<->

Spectral lines of the measured object
(Thin blue and red curve)

One of the interesting questions at this point is why we are dealing with the **interpretation of the curves of the etalon of the physiological standard of group A in comparison with the curves of the image of the object being measured at the moment.** In principle, we are already getting suggestions from the Pathology register (group C #) as to which pathological process it 'probably' could be. And this is exactly the topic. Our databases have been filling up for more than 20 years and they may continue to grow in the future, but in the end they cannot be equipped with all known diseases. The art of a specialist now lies in the fact that he can interpret the spectral curves independently of a register (pgroup) and draw his findings from it.

Note: Spectral curves can be viewed in the '**Analysis**' module in relation to the entropy points. In the '**Test**' module, you evaluate the measured spectral pattern with specific etalons from the register groups. Furthermore, spectral curves play a major role in the '**Comparative analysis**'. There you can see to what extent the spectral curves have changed from the first to the second measurement, or what the effects of the vegetotest are in relation to the measured spectral pattern.

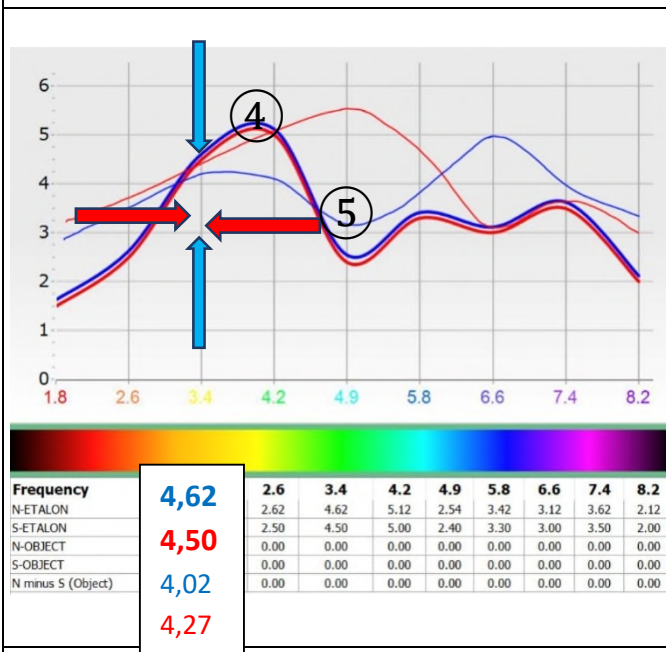
But now we will first look at the measured spectral pattern of the stomach in the '**Test**' module together in comparison with the physiological spectral pattern of the stomach from the **register group A #**.



Review:

1, always starts with the maximum amplitude of the sample.
 here **4.2Hz** = mucous membrane of the gastrointestinal tract
 Location of the Yin point (**BLUE**) in relation to the etalon (**blue**)
 = 1.22 Equivalent points (E) difference
 = decreased functional activity of gastric mucus-skin
 - loss of structure - cell division
2, Location of the Yang point (**RED**) in relation to the etalon (**red**)
 = **0.11** Equivalent points difference
 = catabolic state = increased cell division -increased metabolic activity - increased recovery level, but thereby decreased cell size

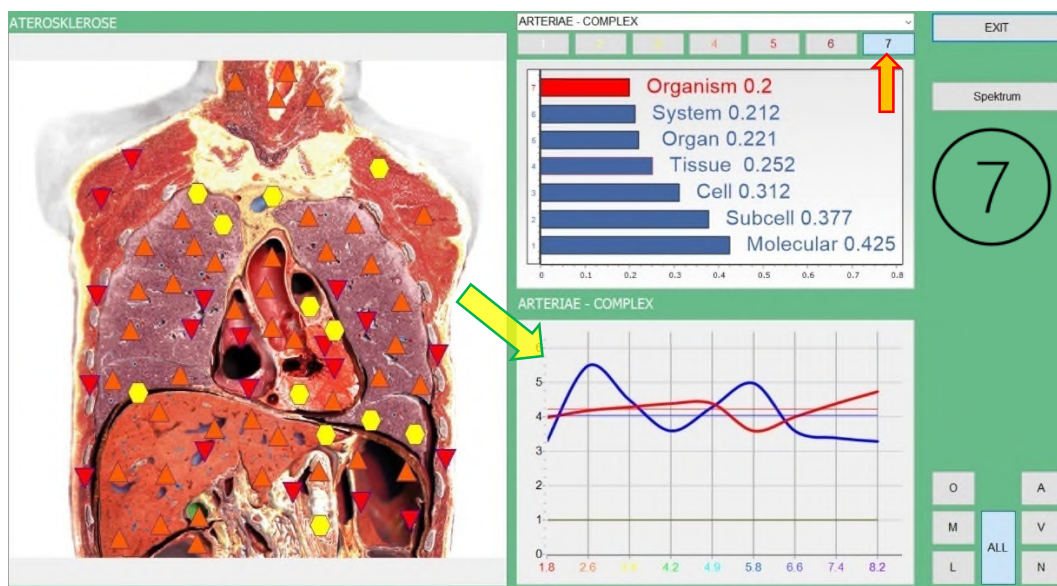
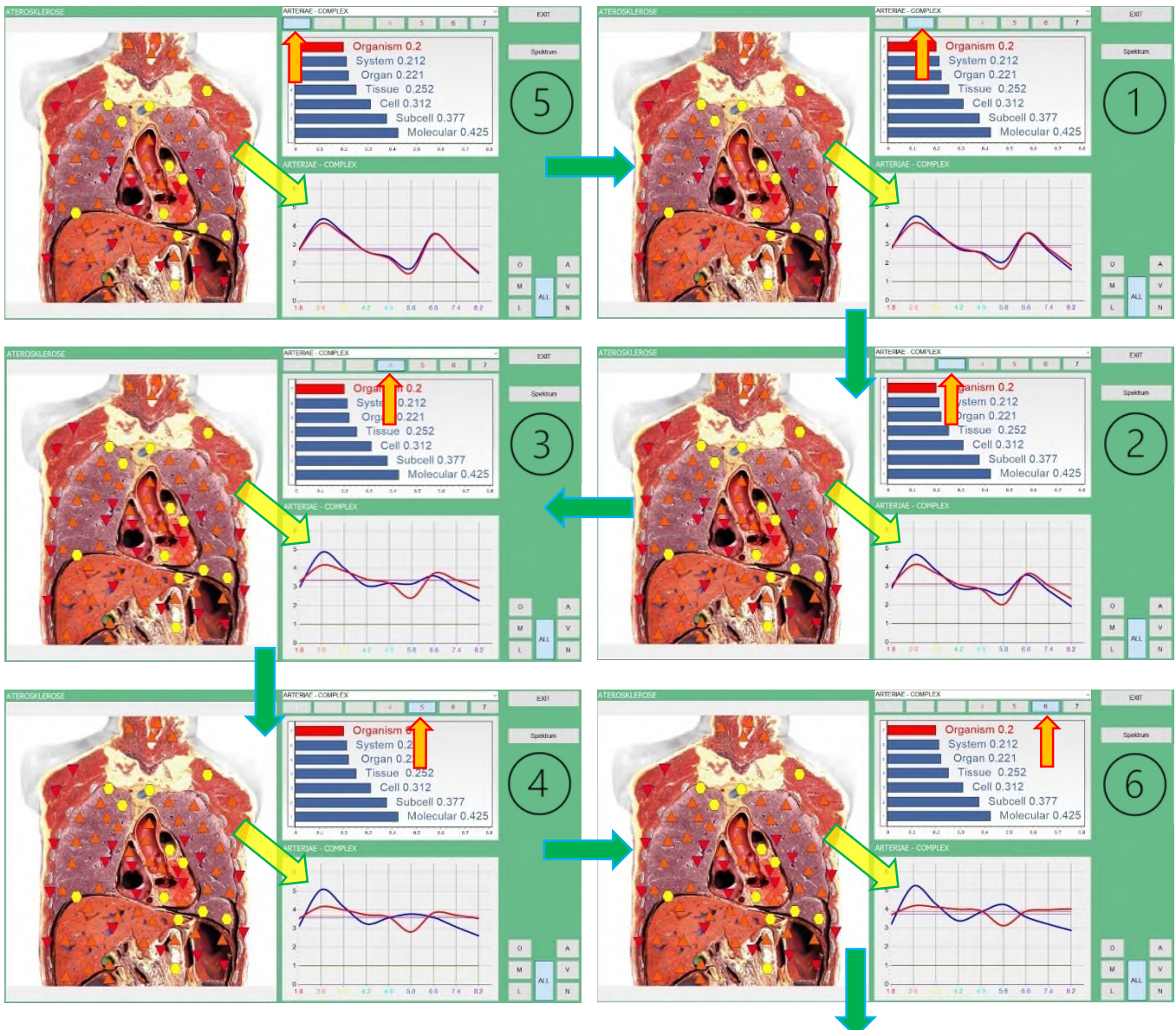
3, The relationship of the amplitudes among themselves has formed in favor of the southern spin (Yang) – the catabolic activity in this area predominates. From this it follows that the necessary level of functioning (Yin) of the structure (mucous membrane) is not achieved.
 In biological structures, this condition most often occurs **when the necessary amount of water is lacking in this place**, which then leads to a processing disorder of glucose.



Review:

4, the next frequency for analysis is that of the sample where the amplitude is closest to the first one. If we do not find such a one, then we start at **1.8Hz**.
 Here it is **3.4Hz**, it corresponds to the muscle tissue of the organ. The order of analysis is the same – what is the ratio of the points of the northern (Yin) and southern (Yang) spin in relation to those of the pattern in the patient's graph?
 They in point is **0.6E** lower than that of the pattern, which means only a moderate decrease in functional activity, in contrast to the mucous membrane before.

5, The Yang point is lower by **0.23 E**, that is, more than in that of the mucosa. Although the recovery level of muscle tissue is higher than the functional level, the difference between them is less than in the mucous membrane. Thus, we can conclude that the pathological condition of the mucosa has existed for a longer time (than the condition in the muscle tissue). But since both are in the same phase, we can assume a long-lasting pathological condition. We can also assume that to compensate for the pathology, a shift between 2 cotyledons has occurred (endoderm – mesoderm) in order to maintain physiology.





The TEST module — the 'toolbox' of the specialist

REGISTER

V...	E. Dispe...	L. T...	Etalon
	0.000		THORAX UND ABDOMEN, AXIALSCHNITT, AUF DER EBENE DES AUFSTIEGENDEN TEILS DER AORTA, VON VORNE
	2.466		Optimum
	0.210		Virtuelles modell
● 8	0.246		PYELONEPHRITIS
● 10	0.248		RADIKULITIS
● 1	0.390		RHINITIS
● 1	0.460		GALLENBLASENDYSKINESIE
	0.492		GASTRITIS
	0.518		ZYSTITIS
	0.587		HELMINTHOSE
	0.609		RESPIRATORISCHE INFektion
	0.686		ENTEROSPASMUS
	0.775		PNEUMOSKLEROSE
	0.782		KIEFERHÖHLENTZÜNDUNG
	0.789		KOLITIS
	0.793		ENTERITIS
	0.842		GASTROENTERITIS
	0.854		PHARYNGITIS
	0.965		CHRONISCHE PERSISTIERENDE HEPATITIS
	1.018		PROSTATITIS
	1.020		ENZEPHALOZELE
	1.024		CHRONISCHE TONSILLITIS
	1.040		AKUTE BRONCHITIS
	1.049		TRIGEMINUSNEURALGIE
	1.053		CHRONISCHE MEGAKARYOZYTÄRE LEUKOSE
	1.053		AZOOSPERMIE
	1.070		HYPOPARATHYREOSE
	1.076		ÖSOPHAGITIS

List of etalonsofthe REGISTER

TOOLBOX

This is now the worktop or the **work surface of the specialist**. After you have prepared the corresponding objects with nidus or area marking and evaluation in the analysis module, you can analyze which load is most likely to be present here.

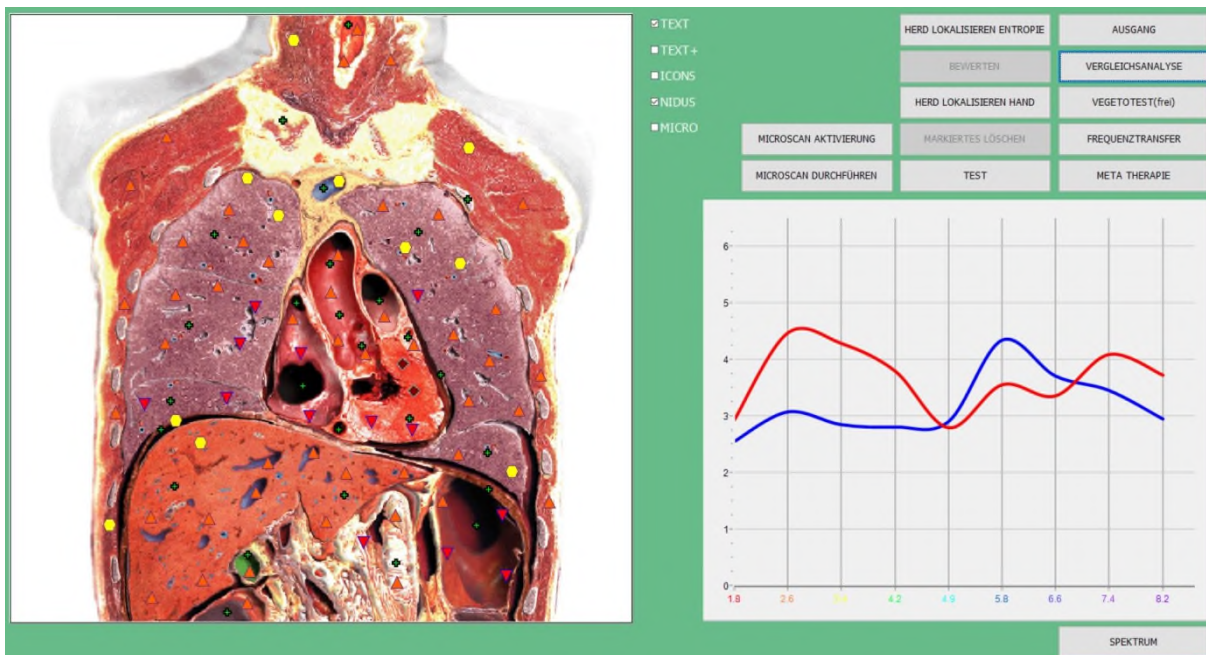
- Step 1: Select the corresponding **register** or **registers** by clicking on the box with the left mouse button (if the register is active, you will now see a check mark in the box and the list of etalons will fill up). [If you do not see any etalon in the list, please click the **'ALL ETALONS'** button.]
- Click the left mouse button on the first line after the 'Virtual Model' line. This is now highlighted 'blue' and thus 'active'.
- Click the **'ABSOLUTE MODEL'** button from your toolbox with the left mouse button. You will now see red dots and numerical values appear in the etalon list. What do they mean? A red dot indicates that sub-processes (etalon) which are marked with a this dot are involved in the process that takes place in this object, by algorithmic calculation. One with 10 shares, one with 1 share and one with 3 shares, etc. The mathematical value of the virtual model, as a rule, will now be less than the value of the etalon in the first place. This means that the marked etalons (processes) with corresponding probability form this process. The same rule applies here as already described for the coefficients – see above.
- Click the left mouse button on the line 'Virtual Model'. This is now highlighted 'blue' and thus 'active'.
- Now click on the **'ENTROPY ANALYSIS'** button. Now you can see at what level the process has manifested itself and what direction it is taking. The numerical values tell you whether it rises or descends (as with a staircase). Where is the closest value from the red one (active value = active level). Please refer to the previous chapter for the exact interpretation.



THE EXAMINATION EXAMPLE

Follow the way of the specialist

The 'ANALYSIS' module



At this point, you will see both expert systems 'side by side' for the first time. What impression do you get when you look at the lines of the measured spectral curves? Do you still have the principles of interpretation in mind? Where are the inversions located? How large are the dissociations? At what frequency is the probable cause to be found?

Inverting can be found at frequencies 1,8 – 2,6 – 3,4 – 4,2 and 7.4 - 8.2 Hz -> location of catabolic metabolism.

Dissociations can be found in the entire frequency range => so there is plenty of space for pathological processes.

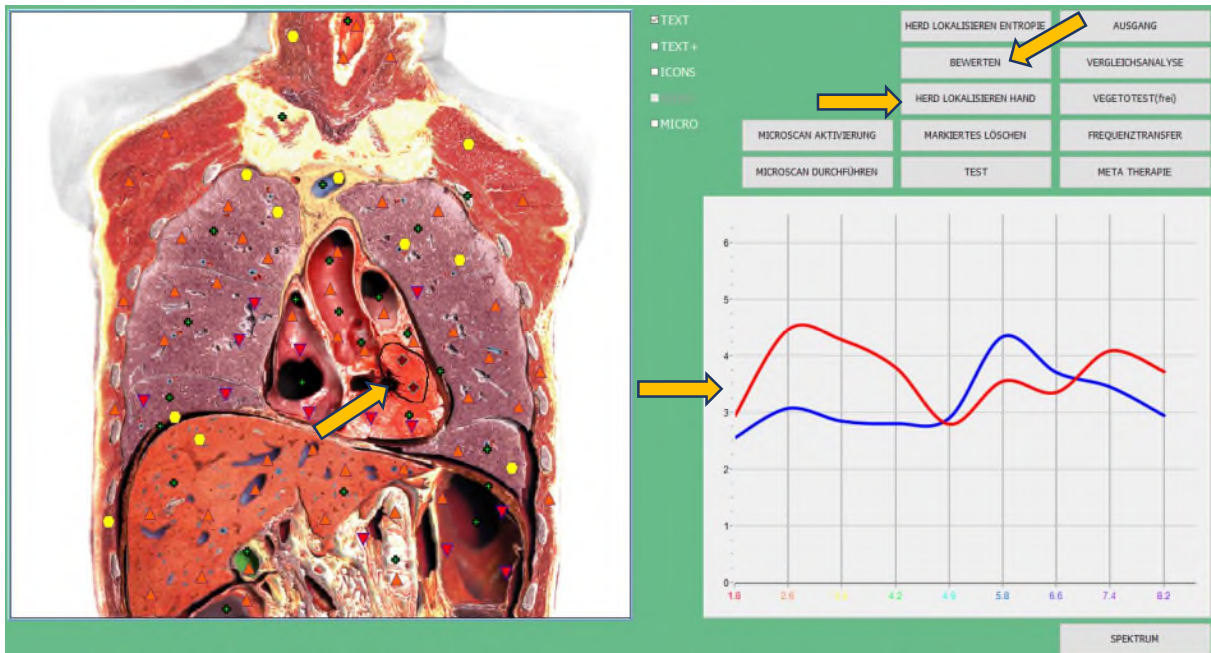
Probable cause under very close consideration is the frequency 7.4Hz (sympathetic) => continuous stress leads to catabolic derailment. I will explain this in more details in the chapter for the professionals.

The expert system 2 with its entropy points (EP) results in a distribution of 72 measuring points for this object:

- 1st degree EP = 0
- 2nd degree EP = 11
- 3rd degree EP = 46
- 4th degree EP = 13
- 5th degree EP = 2
- 6th degree EP = 0

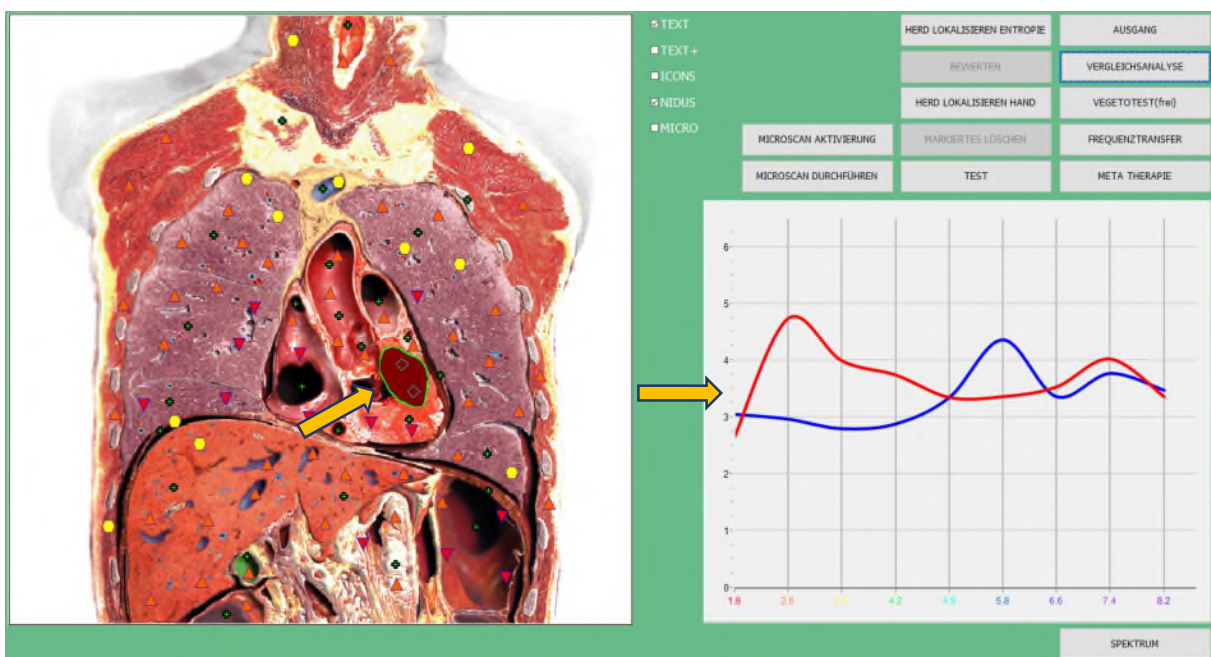
If we consider the percentage distribution of the entropy points, then the center of gravity is clearly in the physiological range (a total of 57 EPs of the 2nd and 3rd degrees, corresponding to ~79% of 72 EPs). The 12 entropy points of the 4th degree indicate regulatory activity and the two ones of the 5th degree indicate impending overload. The ability to regulate is currently still exists, but the spectral pattern shows us that the organism does not manage to return to the norm on its own without support. It is likely to become a subacute condition. CATABOLISM primarily affects EPITHELIAL CELLS and thus the mucous membranes. So you already have a first impression of the condition of this body section.

The 'ANALISYS' module



The main focus at this point of the program is the preparation of the information that we have already received. You can now evaluate individual points or areas in more detail. Only entropy points or areas with the 1st degree EP or the 4th – 5th degree, or the 6th degree EPs are interesting. The 2nd and 3rd degree EPs are physiological and thus 'fall out' (even if you could have them evaluated by the software). In this example, we have marked the two 5th degree EPs in the area of the heart muscle.

To do this, click the left mouse button on the **MANUAL NIDUS LOCALIZATION** button and move the mouse cursor to the desired location of the object, press the left mouse button and begin to **circle the area**. Now release the mouse button and you will see the **area with a black border**. You can also circle other areas. Now press the **EVALUATE** button and the program will 'rate' this area so you will get the following image. **Note the changed spectral curve of the area.**





Now we want to analyze and evaluate this NIDUS (= focus or area) more precisely. To do this, you need to go to the 'TEST' module. It is used for a detailed evaluation of the entire object or a specific area of this object. Why are we doing this? Because an area evaluation makes pathologies and / or microorganisms more reliable. At this stage, YOU are now invited to use your experience and gain new practice. For this we will now share with you some ideas and our personal interpretations.

The 'TEST' module (the specialist's 'playground')

Step 1

Select the necessary registers, the etalons of which you want to have displayed, using the left mouse button. Start working in a structured way! Therefore, we ALWAYS start with the **registers C# Pathology and E# Microorganisms (together)**. The idea behind this is that the previous developers proceeded from the assumption that microorganisms are always involved in the pathological process. This is partly true, but another thing is also partly true. Tracheitis can be caused, for example, by exposure to cold on a small branch of the vagus nerve, which is located in the back of the auricle. When we are testing now, we have not yet detected any involvement of microorganisms. Later, microorganisms can be involved in the 'clean-up' and can be measured. In addition, we will consider diseases in the aspect that microorganisms serve to clean the environment. (The vagus nerve innervates many internal organs on its way through the body!)

Step 2

Click with the left mouse button on the first etalon in the list of etalons, which is now highlighted in blue. Consider the coefficients before the individual etalons. Think about the following gradation: 0.000-0.425 = reliability (probability) of 96% / 0.426-0.750 = reliability of 65%, etc. Here, starting from the first line, you can see the coefficients 0.556 — gastritis and 0.594 — cardiac arrhythmia, etc.

In addition, we now know that these two pathologies with a probability of 65% are most similar to the process, but we do not know more. To come to a clear statement, you need to use the **'ABSOLUTE MODEL'** work tool. To do this, click on the corresponding button.



NILISA advanced

Device: Nilisa
Last update: 1 day
DLL still: 1 hour
C:\Users\rhpsay\AppData\Roaming\NILISA_advanced\setup



EMPFANG

EINSTELLUNGEN

BEENDEN

Academy of holistic medicine Germany 2020

Part II – Chapter 1 – Paragraph 3

THE WAY OF THE PROFESSIONAL

Paragraph 3: THE WAY OF THE PROFESSIONAL

For you as a specialist, the most important functions have been explained on the previous pages so that you can work in a rational and structured manner. However, the longer you have worked with this system, the deeper you have now penetrated into the matter, so, of course, you would like to deal with it more filigree. You have already (hopefully) created various examination profiles and supplement them depending on the question of your current case. A non-linear system provides you with data and, of course, it's not a bad idea to use them to come to a result quickly and succinctly. We would now like to introduce you to this path.

Let's get to the crucial questions:

What is significant, what is a major issue and what is just an operation area?

In order to be able to answer this, you therefore need a **concept or a guideline for a structured analysis**.

Answer yourself the following questions:

What could such a concept or guideline look like?

Which objects should and do you want 'always' to examine?

With which registers data do you need to compare the measured objects in order to come to reasonable answers and a therapeutic strategy?

What are the 'main construction sites' and what is just an 'operation area'?

How 'likely' or better 'reliable' are the indicated pathologies or processes?

Are microorganisms possibly also involved in a pathology or process?

Note that the objects of the guide should be considered under these aspects:

A	Entropy degrees 1 – 6	}	A and B serve to focus for analysis and therapy
B	The coefficients of the registers (-> Notes!)		
C	The curve graphs (spectral patterns) of the measured object (ACTUAL state) in relation to individual etalons (PROPER state)		
D	The Entropy analysis		
E	The NLS-Analysis		

And that you can or should **supplement** the **basic guideline** with the following points (objects):

- + Problem-relevant motives of the patient (e.g. shoulder pain or knee pain, etc.)
- + Priorities related to the motivation of visiting your outpatient clinic, e.g. purification (detoxication) — psychotherapy — natural hormone therapy, etc.
- + What cross-focus does entropy analysis provide us with? (e.g. chronic fatigue syndrome -> thymus).

Now we have created a clear structure for our concept or guideline and should be able to get an exact picture of the status quo of the patient / client within a short time. (see the 5 components of an analysis).

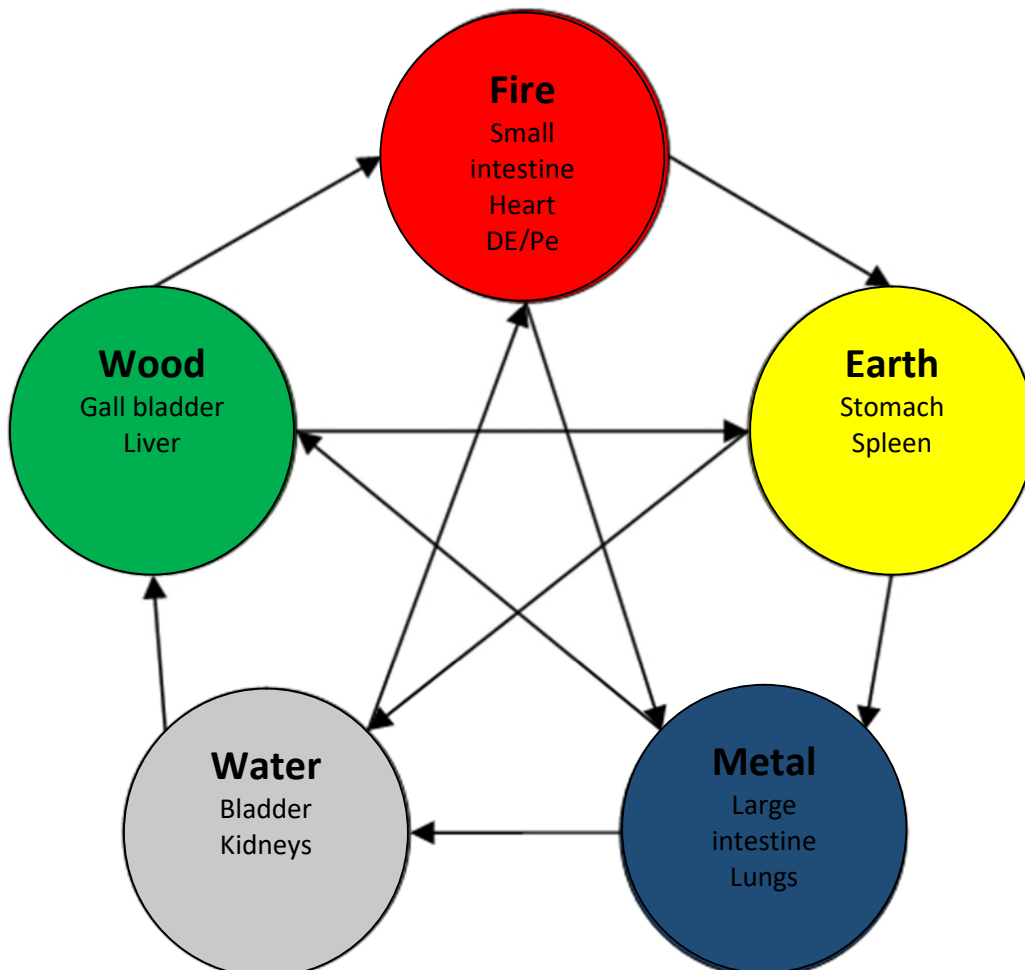
The 5 components of a structured analysis based on the contents of the 'NOTES'

How do I rate the content of my 'NOTES' (formerly epicrisis)? How do I set the focus for the further analysis and the subsequent therapy? We will once again pick up the 5 cornerstones for a structured analysis.

It is worthwhile and useful if you are (well) familiar with the following **5 principles**:

- a, Chinese medicine (basic principles are sufficient);
- b, the pathogenetic basic patterns and causal chains according to Dr. Schimmel and
- c, the theory of germ leaves;
- d, the frequencies and the associated structures - organs - tissues - cells - etc.;
- e, the synergistic interactions based on the alchemical - spagyric way of thinking.

The (Yin) principles of Chinese medicine — the 5 elements



The 5 basic pathogenetic samples (patterns) according to Dr. Schimmel

It is certainly easier to learn the few facts from these pathogenetic basic samples and causal chains than the overwhelming variety of syndromes, the causes of which are not yet all known. **In the beginning there is always a pathogenetic basic sample, from which one or more causal chains arise.**

Based on his own long-term medical experience, Dr. Schimmel **identified 80% of all patient complaints in these basic models** and explained by **causal relationships**. By definition, **pathogenetic basic samples are organ disorders** that occur regularly in chronic diseases and are well diagnosed with special examination methods. ... *'I myself have had to learn over the past 15 years that chronic diseases are practically always accompanied by pancreatic disorders'*.

Based on my own (D. Pöhlmann) experience with these special measurement methods, I was able to determine that in 90% of patients with chronic diseases, the organs:

- Liver with intrahepatic bile ducts,
- Pancreas,
- Large intestine / small intestine,
- Kidney,
- The paranasal sinuses are either functionally violated or affected by the disease.

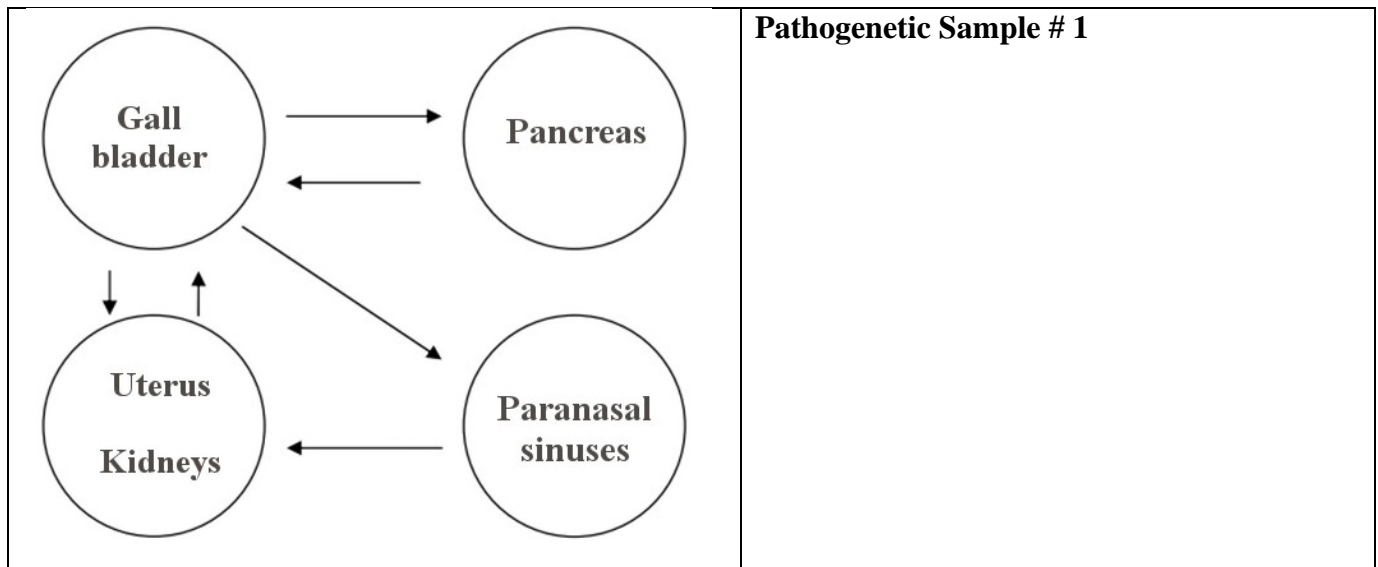
Under this aspect, infections with bacteria, fungi and viruses rank 2nd (=secondary) place, because the disturbed energetic environment makes infection possible in the first place (1st place = primary)!

Your own notes:

Currently recommended source and reference 'Eugen Schmidt—Selected Pharma GmbH' - 1st edition 2018

And a few more small pearls that I (D. Pöhlmann) have collected on my long way so far are the following:

- > Earwax is an indication of detoxification via the liver,
- > 'Dust of slumber' in the morning in the eyes is an indication of detoxification of the spleen (melancholera),
- > Ingrown nails — which meridian ends here? = too much energy in this organ!
- > ...



Most often (primarily), a nidus occurs in the gall bladder, liver and intrahepatic bile ducts, which is quite quickly accompanied by changes in the pancreas. It should be noted that the **frequency 4.9 Hz**, which is reliable for the mucous membranes of all bile and urine excretion pathways and expresses the primary (stem) cell (zygote), is the highest, which indicates an enormous functional significance of this area of the organism.

It can be assumed that it is precisely the stage of **excretory function** of the biliary tract that is one of the main bases of maintaining the optimal level of homeostasis by the organism.

Dysfunction of the liver and pancreas leads to a disruption of excretion and intestinal access for enzymes, fat emulsifiers and antibodies, as well as to a reduction or increase in the release of hormones, vasoactive substances and much more into venous blood.

An extremely important role is played by the state of the duodenum, in particular, that of the section of the **Papilla Vateri**, where hepatic / bile and pancreatic ducts enter (*ductus choledochus - ductus pankreaticus => ductus hepaticus communis = papilla vateri => duodenum*). **Important anatomical place for therapy!**

Chronic processes in the **liver and pancreas** lead primarily to functional overload (syndrome), and later also to the appearance of a nidus in the urinary system. The same processes cause the development of chronic sinusitis, which elements of the rupture of its compensatory, hyperexcretory function, which in parallel has a negative effect on the urinary system, as well as the prostate in the man and the ovaries in the woman. The latter often occurs as one of the main elements in the development of migraines.

The given pathogenetic model is an initial element of all chronic diseases of the epigastric region.

Significant clinical signs in frames of the listed model:

- Skin diseases (dry eczema = liver / wet eczema = kidney),
- Diseases of the oral cavity and sinuses,
- Diseases of the liver and gall bladder,
- Dysfunction of the pancreas,
- Dysfunction of the kidneys and bladder,
- Diseases of the joints (pelvis, knees, ankle, spine),
- Neuralgia of the trigeminal nerve, depressive syndromes,
- Disturbance of balance, 'buzzing' in the ears,
- A bruise in the retina, up to retinal detachment,
- Diseases of the organs of the breast.

An example of the application of the 5 components in daily work

Here the user will find a case study from practice and the corresponding answers to questions that the specialist encounters in search of the cause. Let's apply the above **5 components** of a structured analysis on the topic of skin disease

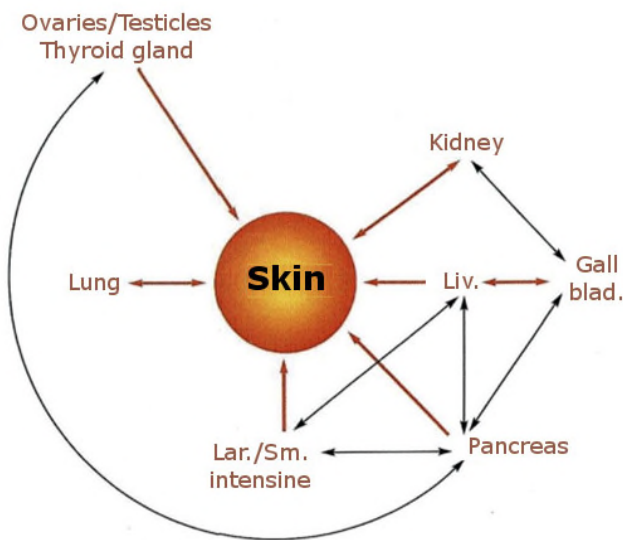
Skin manifestations (eczema – lichen – pimples, etc.) – where can we find the cause?

Let's start with the approach according to the **principles of TCM**.

- the large intestine is responsible for skin — hair and nails,
- let's consider the appearance of skin manifestations from the aspect of which meridian passes here,
- in which reflex zone or projection zone is the rash located.

From the aspect of the **basic pathogenetic laws**, we must consider the following organs:

- liver — for dry rashes,
- kidneys — in case of moist — oozing rashes,
- pancreas — in case of efflorescence on the face and / or rashes on the hands.



Important symptoms:

- With all the painful manifestations of the skin (eczema, blisters, cracks, redness, etc.), think about the following causal damage to organs:
 - Liver and gallbladder,
 - Pancreas,
 - Large intestine,
 - Kidneys.
- With all other skin lesions, such as sluggish turgor, wrinkles, pigmentation changes, think about hormonal balance disorders, such as hypothyroidism, pituitary insufficiency, estrogen/ gestagen deficiency

Fig. from The Pathogenetic causal chains according to Dr. H.W. Schimmel 14.09.2018

From the point of view of **cotyledon theory**:

From the ectoderm (the projection zone of the being of the soul) arises, among others, the nervous system (inside) and the skin (outside). Thus, mental sensitivities can be read on the skin of some people.

From the point of view of **alchemy**:

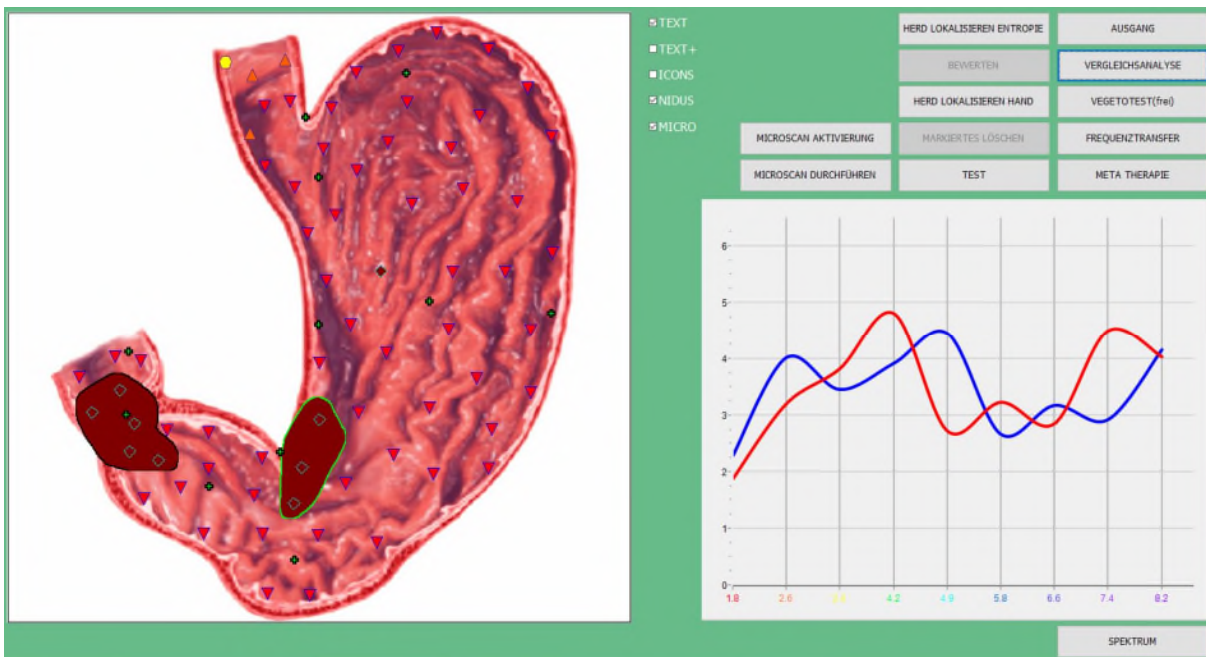
The main excretory organs for toxins are:

- for fat-soluble toxins, the liver — bile — intestinal system,
- for water-soluble toxins, the kidney-bladder system.

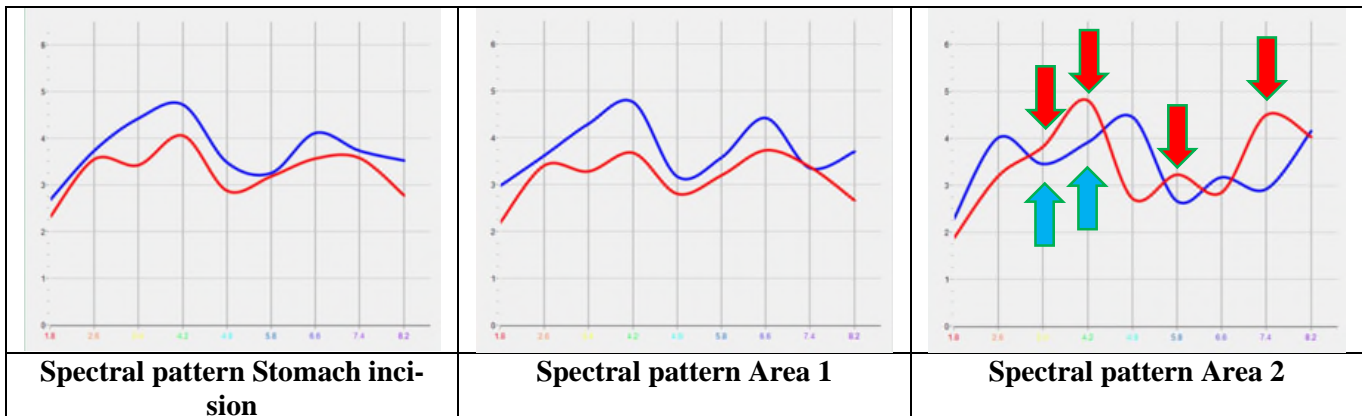
If one of these systems is overloaded, the entoderm (liver-bile-pancreas-intestine) uses the nasal sinuses as passive toxin stores and removes toxins through the mucous membranes to the outside (catarrh) or uses the skin (itching, up to bloody scratching) as a discharge organ.

And do not forget: microorganisms (herpes — coxsackie — measles, etc. and heavy metals (Hg+), etc.

The 'ANALYSIS' module – 'Stomach incision' – NIDUS Testing II – Area 2

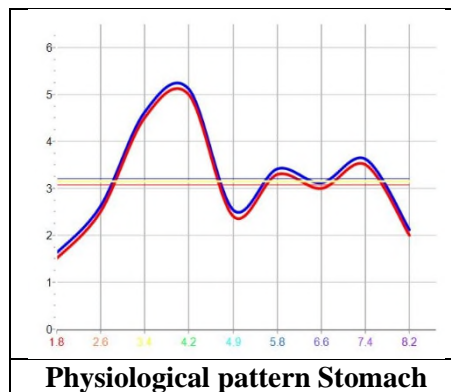


For the sake of simplicity, we will put all **3 spectral samples** next to each other so that you can see the differences more clearly. Which spectral pattern would you like to examine with the 'TEST' module?



Which spectral pattern shows

- > Dissociations?
- > how large are these?
- > at which frequencies do you find these?
- > are there inversions?
- > are the curves flattened?
- > is there a relocation between BLUE and RED lines?



Which spectral sample deviates most from the physiological sample of the stomach?

You can see a subtle flattening of the curves and a lowering of the red curve in the first two spectral patterns. At area 2 you will find **inversions** and signs of **structural loss**.

=> Area 2 is TEST-ing.

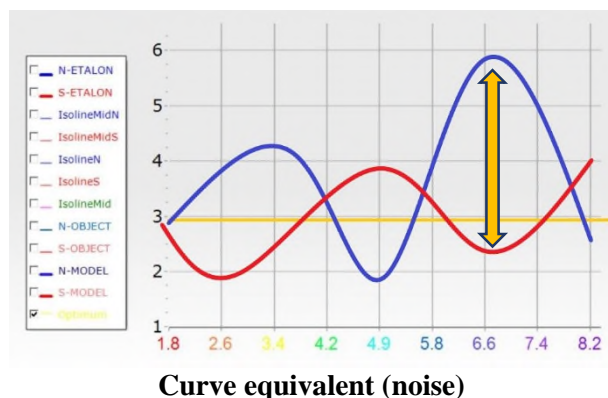
Are you slowly discovering the meaning and purpose behind the spectral curves? They offer you the opportunity to recognize the **relative** severity of a deviation when you look at a spectral pattern per se. In addition, you have the possibility to recognize the absolute severity of a deviation if you superimpose and compare the measured spectral pattern of the object with the physiological pattern of the object.



Excursus to spectral patterns for professionals– the First expert system I for deepening knowledge

1. Expert system = spectral pattern consisting of the **blue (Yin) line** and the **red (Yang) line**.

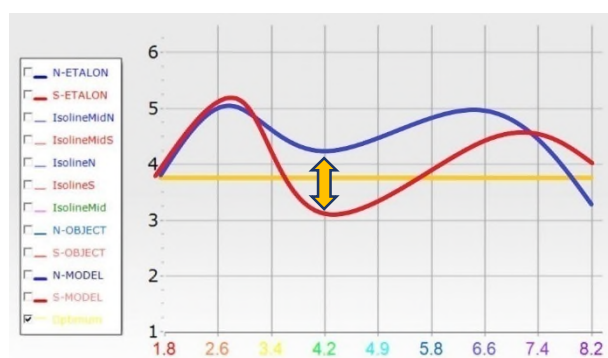
The further these two lines diverge, the more serious, pathological the process is. Normally, the blue curve is directly above the red curve (51:49). If the frequencies of the optimal and off-optimal ratios are known, the examination will allow you to determine what characteristic of the pathological process is involved. If you only have the spectral pattern of the examined object, you can only make a relative statement.



An amplitude difference (dissociation) between the north (blue) and south (red) points of more than 2 - 3 equivalents indicate an acute inflammatory process.

The aspiration of the organ is to achieve the balance as soon as possible.

The picture reflects a very dynamic course in which repair or mending processes and processes for maintaining the status quo or physiological dismantling and construction processes are simultaneously active together.



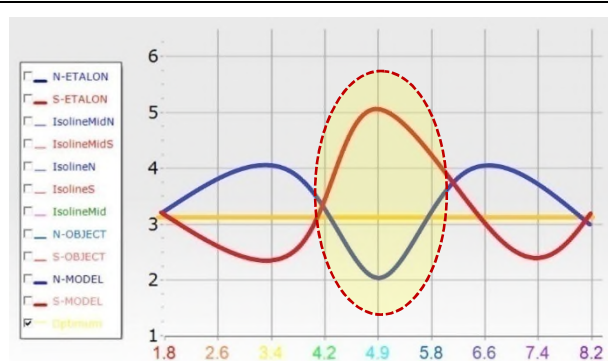
An amplitude difference (dissociation) between the north (blue) and south (red) points of 1 - 2 equivalents and the slope of the **relative midline** above the level of the third equivalent indicate a chronic inflammatory process.

When the organ exhausts, a chronic one develops from a sub-acute state. The curves diverge less, but can be found on the left scale between the value 3 - 4 (equivalent).



An amplitude difference (dissociation) between the north (blue) and south (red) points of about 1 equivalent and the slope of the **relative midline** above the level of the third equivalent indicate a chronic inflammatory process.

In this case, the differentiation of the lines is less, but the blue curve is still above the red curve. There is **an increasing exhaustion**, the body can no longer absorb additional states of irritation.



Inverse state in function or exhaustion of functionality.

There is 'more' given away than given back. There are atrophic, anergic or catabolic conditions in the tissue. The red curve is (clearly) above the blue curve. Please remember the following very carefully:

The Yin and Yang curves oscillate in phase by 180°.
Recovery processes (Yang over Yin) and preservation processes or processes of support of the entropic levels (Yin over Yang).



The 'TEST' module – here ATP – Register E1 Viruses

The screenshot shows the 'TEST' module interface. On the left, a list of viruses is displayed with their corresponding values. The central part shows a spectral analysis graph with multiple colored lines representing different virus patterns. On the right, there are several control buttons for analysis and visualization.

Viruses	Value
10 - NOROVIRUS	0.167
3 - HUMAN PAPILLOMA VIRUS HPV (6 / 11) COMPLEX	0.206
10 - ADENOVIREN	0.214
2 - HEPATITIS-D-VIRUS	0.229
6 - VARIZELLA ZOSTER VIRUS - HHV3	0.239
2 - FILOVIRUS EBOLA	0.257

- 10 – 0,167 - Norovirus
- 3 – 0,206 – Human papillomaviruses (6/11)
- 10 – 0,214 – Adenoviruses
- 2 – 0,299 – Hepatitis – D-Virus
- 6 – 0,239 – Varizella Zoster Virus HHV3
- 2 – 0,257 – Filovirus Ebola

The 'TEST' module – here ATP – Register E1 Viruses INVERTED->VEGETOTEST (internal)

This screenshot is similar to the first one but includes red arrows pointing to the 'INVERT' button in the control panel and the 'VEGETOTEST' button in the 'AUSGANG' menu. The virus list on the left is also updated to show the 'INVERT' status for the selected virus.

Place the cursor on the desired virus and click on the line with the left mouse button. Now click on the 'INVERT' button and an 'i' will appear in front of the name of the etalon of the virus. Now click on the 'VEGETOTEST' button and the software will perform an evaluation.



The 'COMPARATIVE ANALYSIS' module – here ATP — Register E1 Viruses — INVERTED

DATUM UHRZEIT	NAME	PF	System	FARBE	KOD
15-Mai-21 20:27	Plastosomen				0,398
16-Mai-21 10:40	Mitochondrien				0,398
21-Jun-21 19:35	Mitochondrien -				0,3413
21-Jun-21 19:36	Mitochondrien - HUMAN				0,3413
21-Jun-21 19:36	Mitochondrien -				0,3413
21-Jun-21 19:36	Mitochondrien -				0,3413
21-Jun-21 19:36	Mitochondrien -				0,3413
21-Jun-21 19:37	Mitochondrien - VARICELLA				0,3413
21-Jun-21 19:37	Mitochondrien - FILOVIRUS				0,3413

15.05.2021 20:27:29

Frequency	1,8	2,6	3,4	4,2	4,9	5,8	6,6	7,4	8,2
W-FREQUENZ	2,46	4,03	3,17	3,20	3,67	3,91	4,61	4,61	3,80
W-ETALON	2,62	3,42	3,30	2,96	2,97	3,96	3,94	3,99	3,42
W-OBJECT	1,97	2,84	3,62	3,32	3,36	3,60	2,80	2,24	2,24
W-SUBJECT	2,73	2,32	2,62	3,54	2,86	3,57	4,01	2,87	2,45
W - S (DIFF)	-0,97	0,52	1,90	-0,32	0,70	0,03	-1,42	-0,63	0,39

VERBESSERUNG DER KOMPENSATIONSREAKTION 32%

21.06.2021 19:37:31
FILOVIRUS EBOLA - Inverted
Mitochondrien - FILOVIRUS EBOLA - Inverted

ETALONS weretested in INVERSION!

Norovirus	+35%
Humanpapillomaviruses(6/11)	+31%
Adenoviruses	+ 25%
Hepatitis – D-Virus	+ 25%
Varizella Zoster Virus HHV3	+ 26%
Filovirus Ebola	+ 32%

To view the **results of the VEGETOTESTS**, click on the 'COMPARATIVE ANALYSIS' button. The result of all etalons **Virus INVERTED** has led to an improvement in the compensatory reaction of **X%** (see above). The range for a normal, adaptive response is **between 18% - 39%**. The response of the body corresponds to a normal adaptation reaction of the vegetative nervous system. It turns out that none of the viruses found should not / does not need to be corrected directly. => **Therapy of the internal environment (acid-base balance)!**

The 'TEST' module – here ATP – Register F5 Poisons / Toxins

AUSWAHL AUFHEBEN WÄHLEN SORTIEREN ALLE ETALONE

Enter text to search... Find Clear

3 - V... E. Dispe... L. T... Etalon

V...	E. Dispe...	L. T...	Etalon
	0,000		PLASTOSOMEN - KAPILLARNETZ DER HIRNHÄUTE - KOPF, SAGITTALSCHNITT, VON LINKS
	0,398		OPTIMUM
	0,097		VIKTUELLES MODELL
4	0,121		NAHRUNGSMITTELTOXINE
	0,123		ANALGAM
	0,124		ASBEST
	0,125		KOSMETIK
	0,127		VAKZINE
	0,129		BAKTERIEN
	0,135		VERSTOPFUNG
	0,137		NERVENTOXINE
1	0,138		VIREN
	0,138		MILCHPRODUKTE
3	0,138		ALKOHOL
	0,142		STRAHLUNG
	0,146		AMOEBEN
	0,147		PARASITEN
	0,149		KOFFEIN
	0,150		TABAK
	0,151		KOHLENMONOXID
	0,155		PHARMAZEUTIKA
	0,159		DARMTOXINE
	0,162		CHLOR
	0,162		ZUCKERTOXINE
	0,163		GLUTEN
	0,167		SCHWIMME-/REINFLEISCHTOXINE
	0,181		FUNGUS / PILZE
	0,187		PRIONE
	0,189		RICKETTSIEN
	0,209		FLUORIDE
	0,268		SCHWERMETALLE
	0,279		INSEKTIZIDE

MUSTER-BESCHREIBUNG

AUSWAHLEN

1,8 - Knochengewebe, (grobfaseriges) Bindegewebe, Haut
2,6 - grobfaseriges und lockeres Bindegewebe, Gelenke, Zwischenwirbelscheiben, Teil der quergestreiften Muskeln, Herzkammern, Aorta, Nase, Larynx, Luftröhre, Bronchien (ohne Epithel), Erythrozyten, Blutgefäße
3,4 - Skelettmuskeln, glatte Muskeln
4,2 - Epithel (vom einschichtigen bis zum kubischen) des Magen-Darm-Trakts
4,9 - Epithel (der Gallenblase, der Gebärmutter, der Bliesler, der Niere, der Harnblase, der Hoden, der Eierstöcke)
5,8 - Thymus, Mandeln, Lymphgefäße, Lymphe, Lymphgewebe, Milz, Hypothalamus, Nebenniere, Pankreas, Parotis, Speicheldrüse, Milchdrüse, Eierstöcke (Stroma)
6,6 - Epithel der Bronchien und der Luftröhre, peripheres Nervensystem, netzgeförmige Substanz, Arachnoide, Schilddrüse, Nebenschilddrüse, Adenohypophyse
7,4 - Alveolen, Subcoron, Arachnoide, Neurohypophyse, Kleinhirn, Rückenmark, sensorische Systeme (Geruch, Tastgefühl, Gehör)
8,2 - Hirnrinde, Netzhaut

NOTIZEN HINZUFÜGEN
NOTIZEN ANSCHAUEN
ETALON-OBJECT
INVERT
OPTIMUM
OBJECT
ETALON

AUSGANG
VEGETOTEST
VEGETOTEST(frei)
VERGLEICHSANALYSE
FREQUENZTRANSFER
ELIMINATION
DYNAMIK EINZELN
DYNAMIK ALLE
AUTO SCAN
NLS ANALYSE
ENTROPIEANALYSE
IMPERATIVES MODELL
ABSOLUTES MODELL
AURA

- **4 – 0,121 – Food toxins**
- **1 – 0,138 – Viruses**
- **3 – 0,138 – Alcohol**



NILISA advanced

Device: Nilisa
 Last update: 1 day
 DLL still: 1 hour
 C:\Users\hpsy\AppData\Roaming\NILISA_advanced\setup



Academy of holistic medicine Germany 2020

Part II – Chapter 2 – Paragraph 1

THE COMPLEX OF SPECIAL TOPICS

You have worked your way up to this page in the book and have certainly been challenged with one or the other topic. As always, the principle applies: practice makes a master. Some time will pass before you can fully 'deploy' your Ferrari (NILISA Advanced®). But you are now one of the specialists who hold the basis for a structured analysis in their hands. Apply it, no matter what system you work with. These are universal foundations and laws. These are valid for any form of analysis.

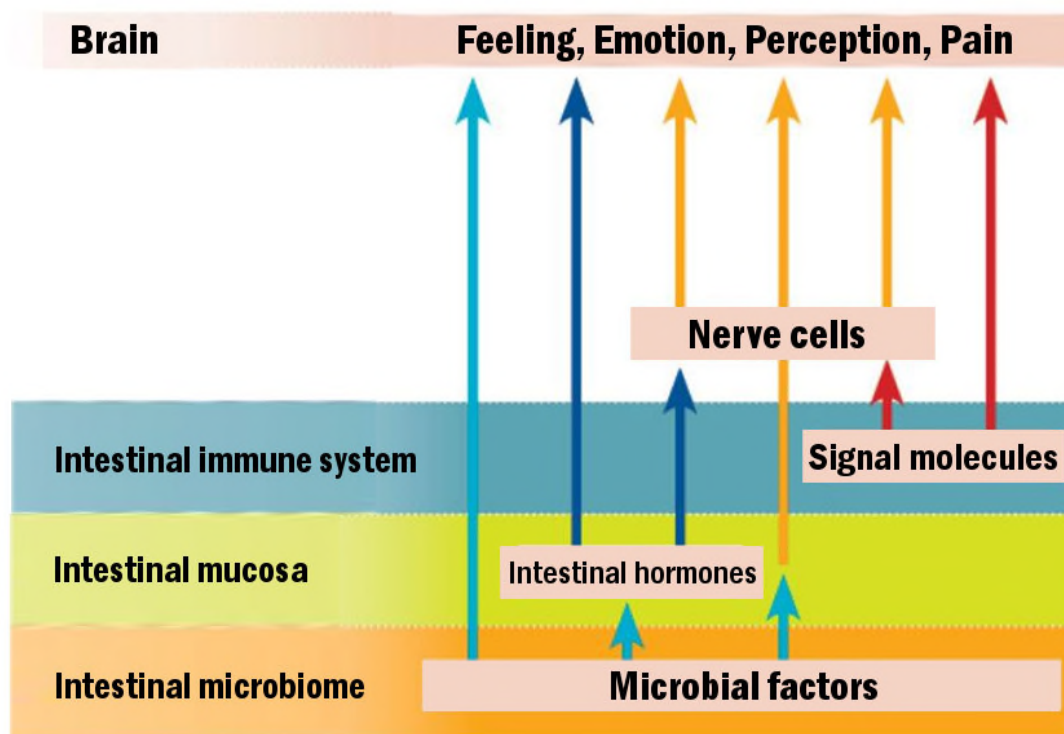
Our motive for writing this book is based on the desire of our colleagues to open access to the world of non-linear systems. Especially with this topic, there is a lack of well-founded documents and training courses. The human desire that a machine or a program can tell us what the client / patient has, has certainly existed for a very long time. It is interesting that the measuring systems currently on the market are usually already able to do this: **to show what is happening to people**. But what the systems cannot do is to show what humans lack. That is now YOUR task, namely to find out with the help of the system what the person lacks. There is nothing automatic, for this you need to apply the knowledge presented. This is the only way to become a professional. And always keep in mind that it can only be done 'for the good of the whole'. If you detach yourself from your 'I-WANT' and follow the path of the cosmos, then you are one with its laws and you are its assistant.

Paragraph 3 Special topic: Intensive-Brain connection

The intensive-brain connection according to Prof. Dr. Gregor Hasler and its implementation with an non-linear system

After reading the wonderful book by Mr. Hasler, we came across a few very interesting points that should be wonderful to implement with the non-linear system. The art of freeing scientific publications from the cloak of theory and exposing the core for practice is an important part of our therapeutic work. Once again, the fact proves that a device provides us with the necessary key data and WE have then to put this building blocks together. So that WE can do this, we are making the first pillars available here. This is followed by individual aspects of this intensive-brain connection and the associated anchor points in the NILISA Advanced® system. The quotes mentioned here come mainly from the above-mentioned book.

Intestinal microbiome-Brain axis



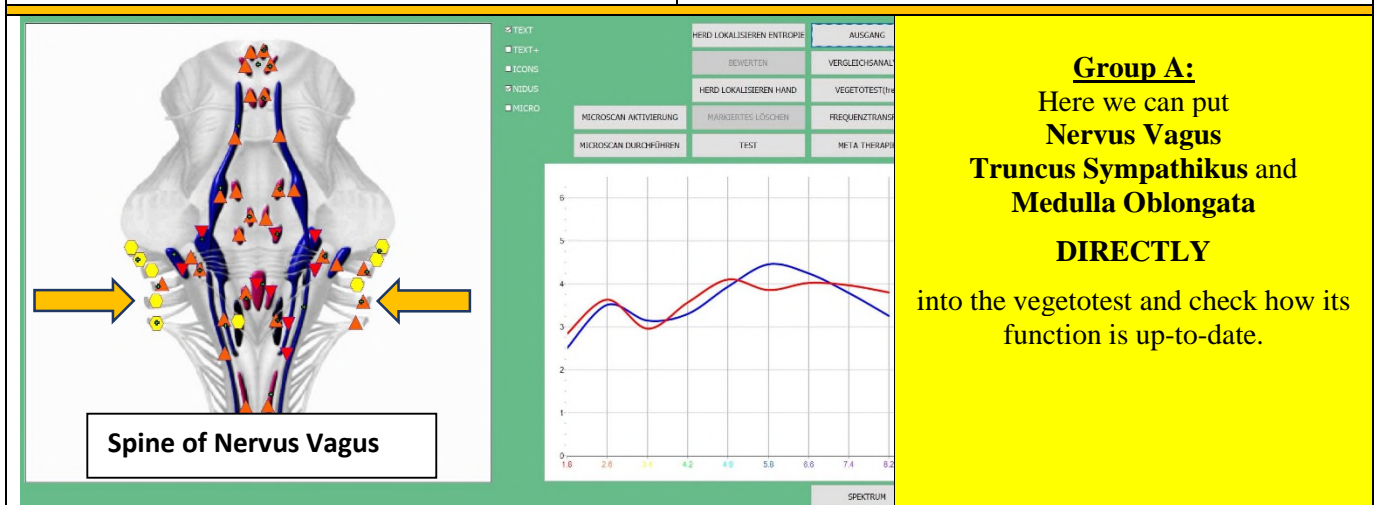
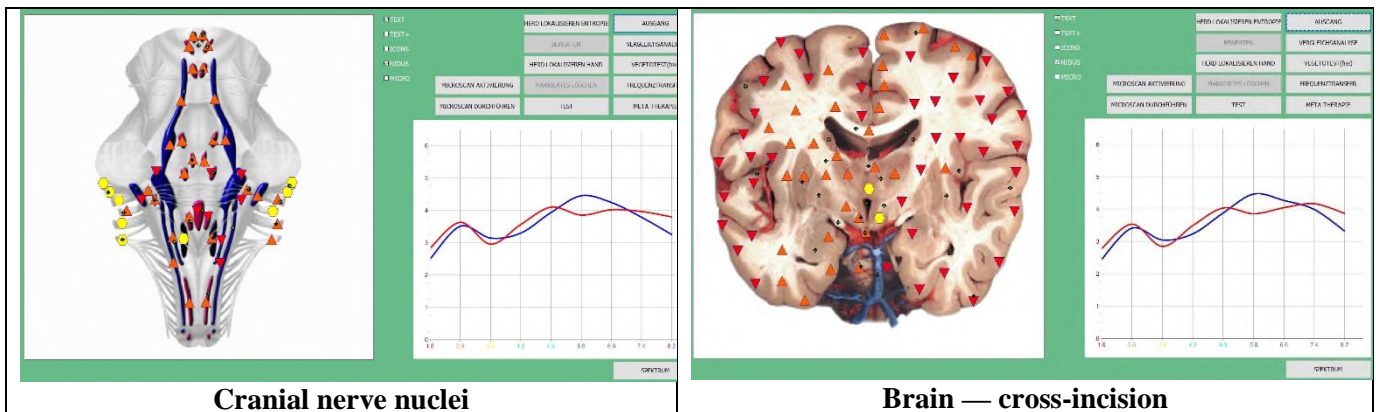
A representative study showed that a lot of body fat was associated with extraverted, impulsive personality traits, while underweight was associated with fears and worries (Hasler, Pine et. Al, 2004). **Psyche, brain, intestines, body fat and nutrition are a coherent system.** (Based on this sentence, we will then select the appropriate objects for measurement.)

Too short a duration of sleep increases **weight gain** and leads to obesity. Bulimia patients have a **dopamine deficiency** (group D1 – D5- M2 and M5 phenylalanine and tyrosine (precursors to dopamine)), which leads to the release of the hormone ghrelin (=> Feeling of hunger increases, but also a depressive mood!). Olive oil, walnuts and chestnuts have an anti-depressant effect.

The **vagus nerve** provides a calming intestinal communication. Through the object (brain nerve nuclei from behind) we can see the status quo of the brain nerves. The thalamus is a nucleus located in the center of the brain, which collects sensations from the body and information from the sensory organs and transmits them to the higher centers of the brain in the outer cortex of the brain. (For this we consider an **object 'Brain cross incision'**).



The objects



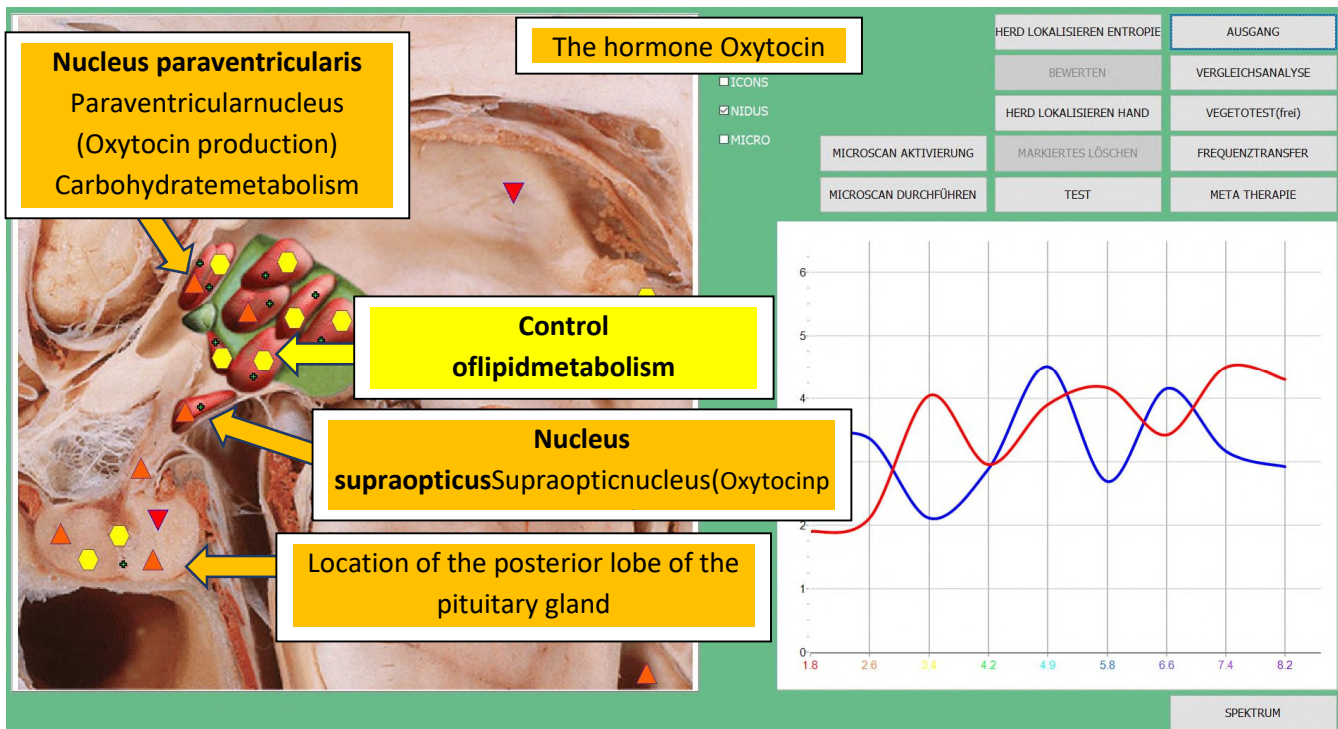
Nervus Vagus= improvement of the healing tendency 28% (normal function - phase #1 Selye)
Truncus Sympathikus = improvement of the healing tendency 6% (exhaustion – phase #3 Selye) <= **Therapy is necessary here!**
Medulla Oblongata = improvement of the healing tendency 35% (normal function - phase #1 Selye)

The vegetative nervous system consists of 2 parts, the sympathetic and parasympathetic. The parasympathetic nerve is predominantly represented by the vagus nerve, which connects the internal organs with the brain. However, the lower part of the colon is NOT innervated by the vagus nerve, but by nerves from the lowest part of the spinal cord, which come from the area of the sacrum. (if we want to look at this part, then at the moment it is possible only through **nerve plexus of the legs**).

The sympathetic nerve, the stress nerve, does not originate directly from the brain, but from the spinal cord. This origin alone shows that it is more primitive and less profound than the vagus nerve. Only 20% of the fibers of the vagus nerve pass commands from top to bottom, the remaining 80% listen to the organs, so to speak, to inform the brain about our 'internal state'. The same vagus nerve, assessing the food and intestinal sounds, also participates in the choice of life partner. The reasons for this are rooted deep in the nervous system. A decrease in vagal activity leads to less interest in communication and in social ties. The vagus nerve works closely with the hormones. He has a particularly close relationship with the hormone **oxytocin**. Oxytocin receptors are located mainly in the brain, the uterus and in large quantities in the intestine. Oxytocin deficiency leads to a leaky and long intestine. **Oxytocin deficiency and sympatheticnerve slows down intestinal movements, promotes the regeneration of the intestinal mucosa and gives growth impulses to the intestinal nervous system.**

Inside the cells, communication occurs both electrically and digitally, but between the cells — in opposite, chemically and analogously. Thanks to such a combination of digital and analogous elements, the nervous system reaches the optimal opportunities for actions.

The hormone OXYTOCIN



The hormone Oxytocin can only be influenced indirectly via its production and storage site.

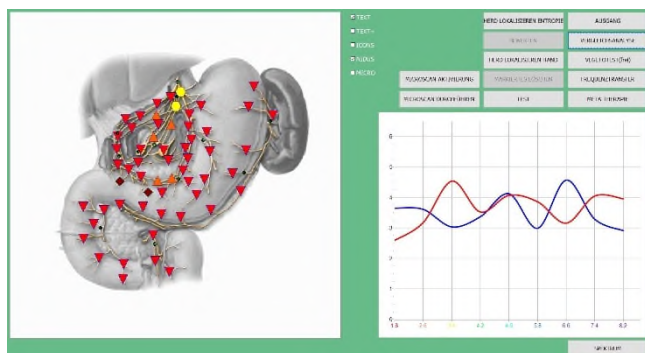
Interoception = listening to the intestine (decision-making on a conscious level 'from the inside').

Interoception encompasses the conscious as well as the unconscious perception of the psychic and bodily inner life. Our sophisticated interoception system works by the following mechanisms:

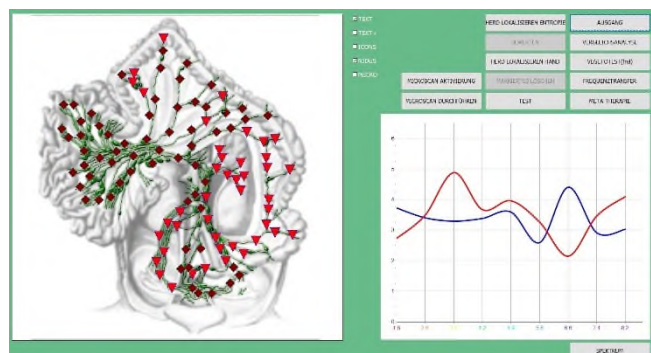
Sensors that measure the condition of internal organs. In the intestine, these are nerve cell endings that react to movements, tensions and chemical processes.

Sensory nerve connections, which conduct the information from the organs to the brain => the vagus nerve.

The intestine is the largest endocrine gland of the whole body. Ghrelin and leptin work together with the vagus nerve to regulate appetite and food intake. Gastrin helps the vagus nerve to control gastric activity. Furthermore, gastrin influences feelings and social behavior. The secretion of glucagon-like-peptide-1 is influenced by food intake. In the brain, it protects nerve cells, strengthens neuroplasticity, i.e. the adaptation of nerves to a changing environment and the formation of new nerve cells. (For this, let's examine the object 'Gastric nerves')



Gastric nerves



Lymphatic vessels abdominal cavity



Resonances of microorganisms with acupuncture meridians

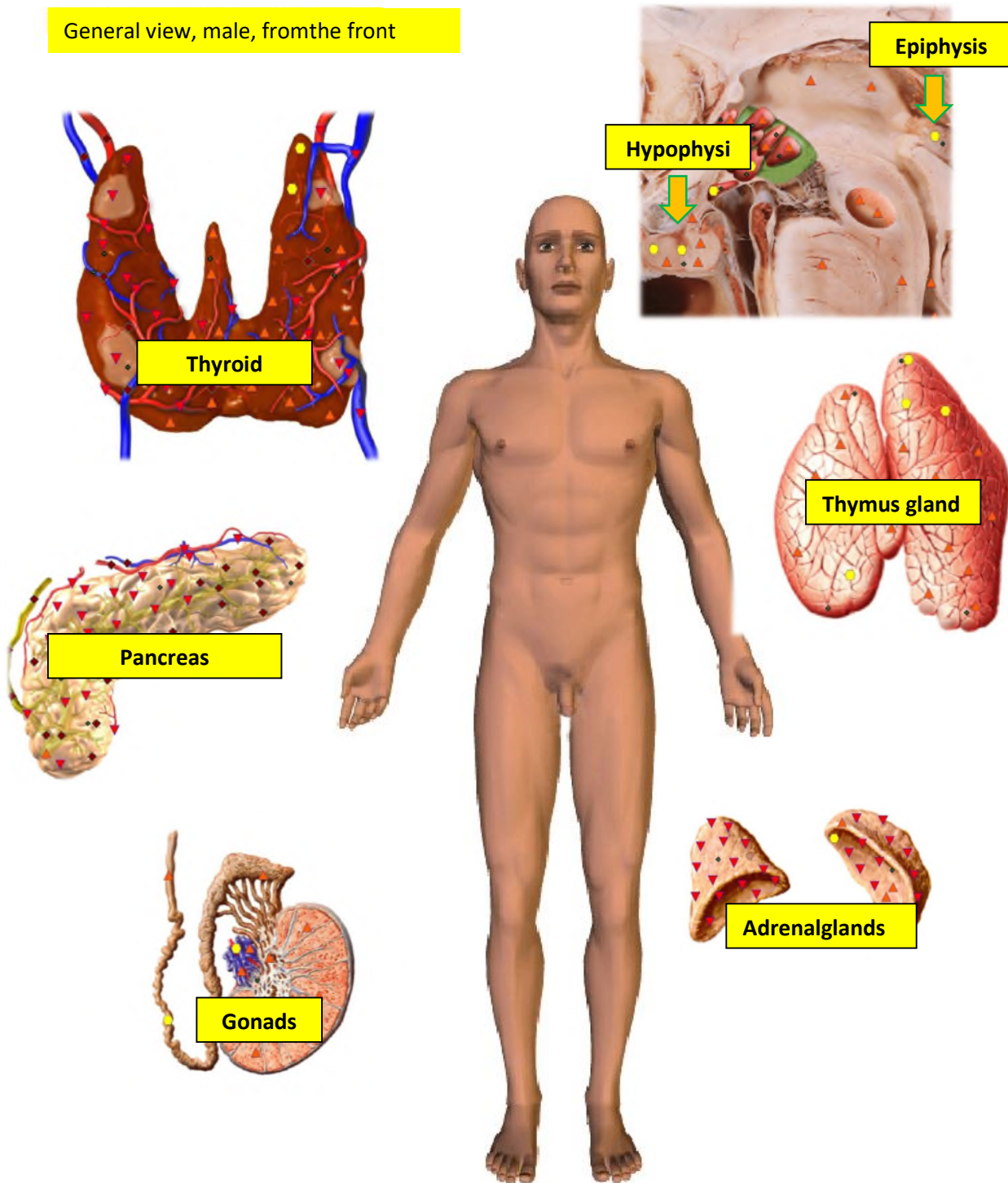
Acupuncture meridian	Resonator	Correlating acupuncture point
Small intestine	Candida albicans	DüDa 8
Heart	Coxsackie V A9	He 4
Spleen / Pancreas	Rubella Klebsiella pneumoniae Coxsackie	MP 9 MP 9 MP 5
Stomach	Streptococcus haemolyticus	M 44
Large intestine	Staphylococcus aureus	Di 5
Lungs	Pneumococcus Klebsiella pneumoniae Bordertella pertussis	Lu 5 Lu 5 Lu 11
Liver	Influenza A and B	Le 2
Gall bladder	Pasteurella	Ga 34
Triple warmer	Streptococcus faecialis	DE 1
Circulation-Sexuality (Pericard)	Herpes Zoster	KS 8
Kidneys	Epstein-Barr virus	Ni 7
Bladder	Chlamydia	Bl 40
Governing vessel	C. Diphtheriae	GG 3
Conception vessel	Streptococcus viridae Brucella abortus	Lu 7 Lu 7
Epiphysis	Measles	Ga 41
Chong Mai	Scarlatina	MP 4

Diseases according to the hours of organs activity

07 – 09 Stomach	Abdominal pain - Loss of appetite - Nausea
09 – 11 Spleen / Pancreas	Hypoglycemia in the broadest sense: tremor - anxiety - craving - weakness - dizziness -> collapse - disorders of the central nervous system -> epilepsy - impaired concentration and thinking / heart attack
11 – 13 Heart	Cardiac disorders - Heart attack - Circulatory insufficiency
13 – 15 Small intestine	Abdominal Discomfort - Diarrhea - Weakness - Nausea - Sweating - Fatigue - Cardiac Discomfort
15 – 17 Bladder	Discomfort in the genitourinary system
17 – 19 Kidneys	Impaired renal function -> Pain - Renal colic - Edema formation - State of exhaustion
19 – 21 Circulation	Circulatory disorders - Heart disorders - States of weakness
21 – 23 Endocrinum	Hormonal disorders - depressive mood
23 – 01 Gall bladder	Sleep Disorders - Biliary Tract Disorders -> Biliary colic - Sweating - Heart Problems
01 – 03 Liver	Sleep disorders - Nausea - Pressure in the right upper abdomen - Headache
03 – 05 Lungs	A complex of complaints caused by lung and bronchial diseases Acid-base balance!
05 – 07 Large intestine	Sleep disorders - sweating - flatulence - intestinal cramps - bronchopulmonary disorders - asthma attacks

Overview of the endocrine system - coarse structures

General view, male, from the front



The executive unit, the pituitary gland (*Hypophysis*)

The pituitary gland is a cherry-sized gland in the brain. It lies in the bony base of the skull to other structures. The pituitary gland consists of:

- Neurohypophysis → stores the hormones **oxytocin** and **vasopressin**
- Intermediate lobe → melanocyte stimulating hormone (**MSH**) skin pigmentation
- Adenohypophysis → **gonadotropins**
 - follicle-stimulating hormone (**FSH**) - luteinizing hormone (**LH**)
 - adrenocorticotrophic hormone (**ACTH**)
 - thyroid stimulating hormone (**TSH**)
 - growth hormone Somatotropic hormone (**STH**)
 - prolactin

The thyroid gland

The thyroid hormones that are formed in the follicular epithelial cells of the thyroid gland (thyrocytes) are **T3 (active form)** and **T4 (inactive form)**. They play an important role for energy metabolism, the growth of individual cells and the whole organism. For the synthesis of thyroid hormones, iodine is needed, which is absorbed with food in the form of iodide ions via a transport protein, the **sodium iodide symporter (NIS)**. In the thyrocytes, by protein biosynthesis, **thyroglobulin** is formed. The thyroid gland releases about 90-95% of T₄ (thyroxine) and only a small amount of T₃ (triiodothyronine) (**calcitonin** is secreted from the C-cells of the thyroid gland).

The parathyroid gland (*... 'Parathyroid hormone makes calcium ready'...*)

The parathyroid hormone, also parathyrin (PTH), is a peptide hormone consisting of 84 amino acids, which is formed in the epithelial cells of the parathyroid glands (4). The main function of PTH is to increase the concentration of calcium in the blood plasma. A low concentration (hypocalcemia) induces increased PTH secretion. The biological half-life of the PTH is 3-5 minutes - after that the polypeptide breaks up into fragments of different lengths.

>**Kidney:** Promotes calcium reabsorption by stimulating the formation of calcitriol (vitamin D3) and inhibits the reabsorption of phosphate.

>**Intestine:** Stimulates the absorption of calcium in the small intestine.

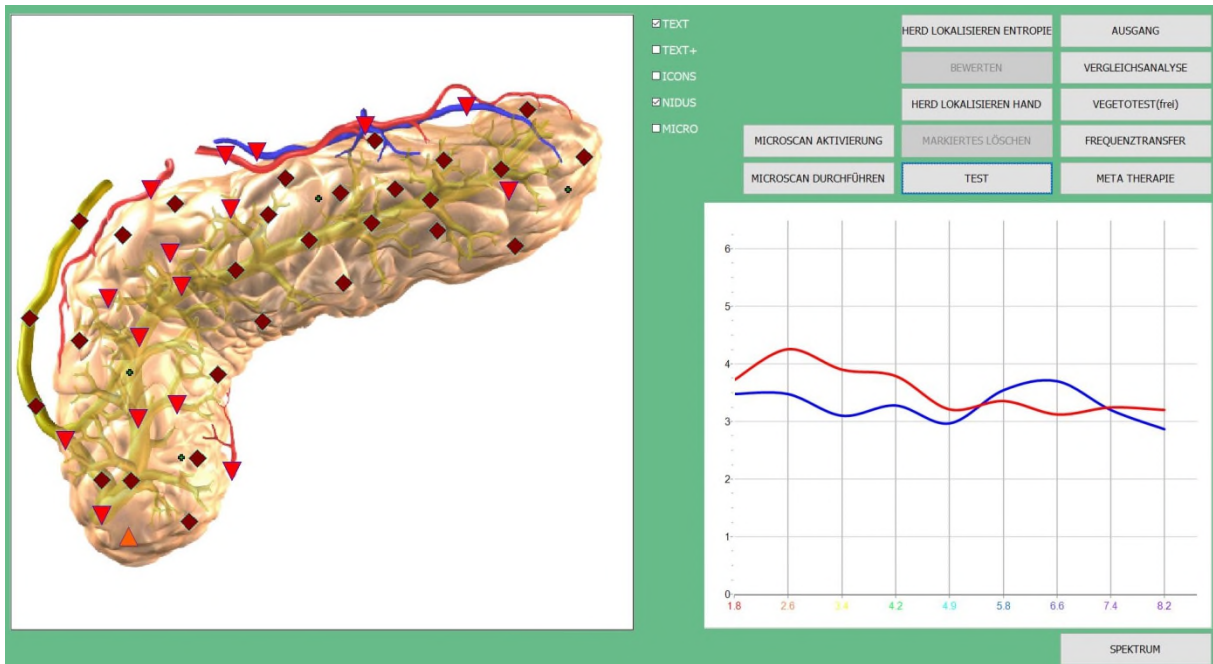
>**Bones:** With intermittent administration, parathyroid hormone promotes periosteal and endosteal bone formation by stimulating osteoblasts. PTH leads to bone loss through indirect stimulation of the osteoclasts, since osteoclasts themselves do not have parathyroid hormone receptors.

The thymus gland (*thymus gland is the largest store of magnesium*)

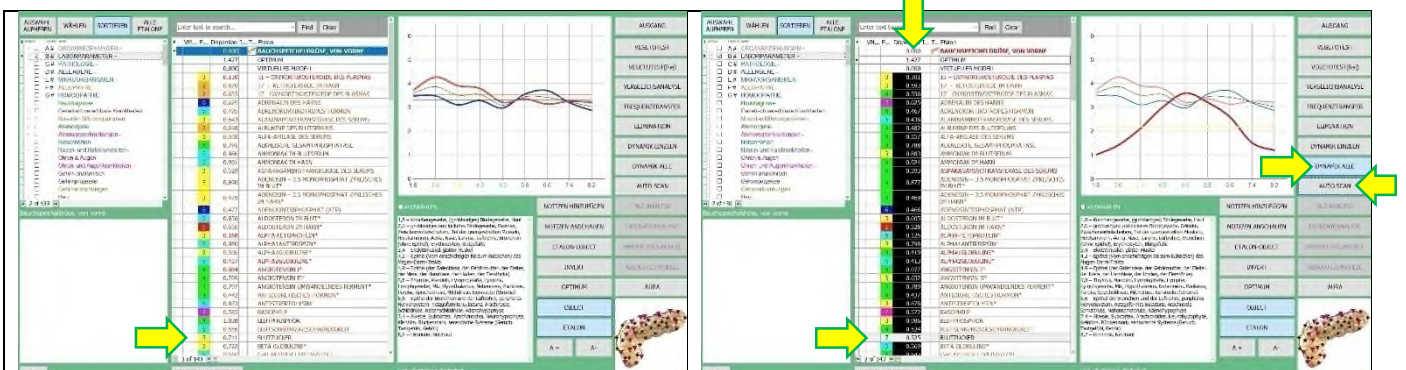
The thymus is located behind the sternum, above the pericardium. At birth and in childhood, the thymus is fully formed. At the adolescent age, it already regresses, until it finally contains only remnants (medullary and cortical tissue). These are embedded in thymus fatty tissue, which, on the contrary, is increasingly formed. The thymus is the most important organ for the immune system.



A 'small' special feature on the topic of Blood sugar and the function 'Dynamics individual / general'

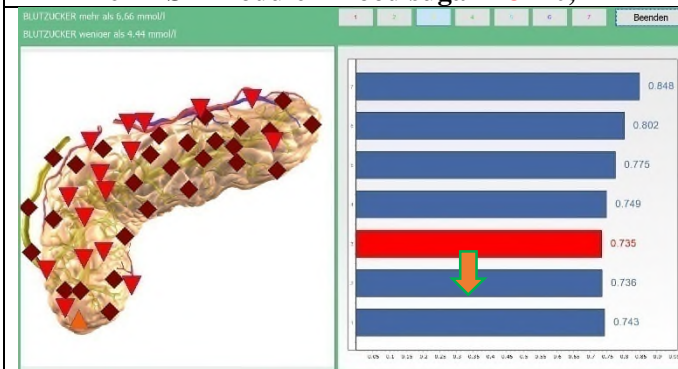


Since the pancreas is an organ of ego development (anthroposophy), it can also not be surprising that it is exposed to massive disorders, especially in today's time of the blatant restrictions of personality rights. In addition to a weakness of the organ, there are increasing tendencies of 'self-destruction' (pancreatic cancer).

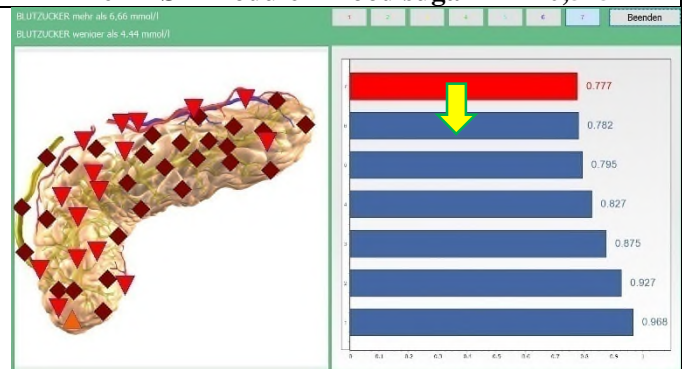


The TEST Module- Blood sugar - 3 - 0,711

The TEST Module- Blood sugar - 7 - 0,525



The NON-LINEAR SYSTEM ANALYSIS Module - Level 3 - 0,735-> 0,736



The NON-LINEAR SYSTEM ANALYSIS Module - Level 7 - 0,777-> 0,782

The 'DYNAMICSGENERAL' button gives you a good overview of the trend of where the Laboratory parameter 'Blood sugar' could develop. A jump from level 3 to level 7 indicates an instability in the blood sugar balance (Insulin resistance? - Type II diabetes? - Organ weakness? ...).



NILISA advanced

Device: Nilisa
Last update: 1 day
DLL still: 1 hour
C:\Users\vhpsay\AppData\Roaming\NILISA_advanced\setup



EMPFANG



EINSTELLUNGEN



BEENDEN

Academy of holistic medicine Germany 2020

Part III – The ATLAS

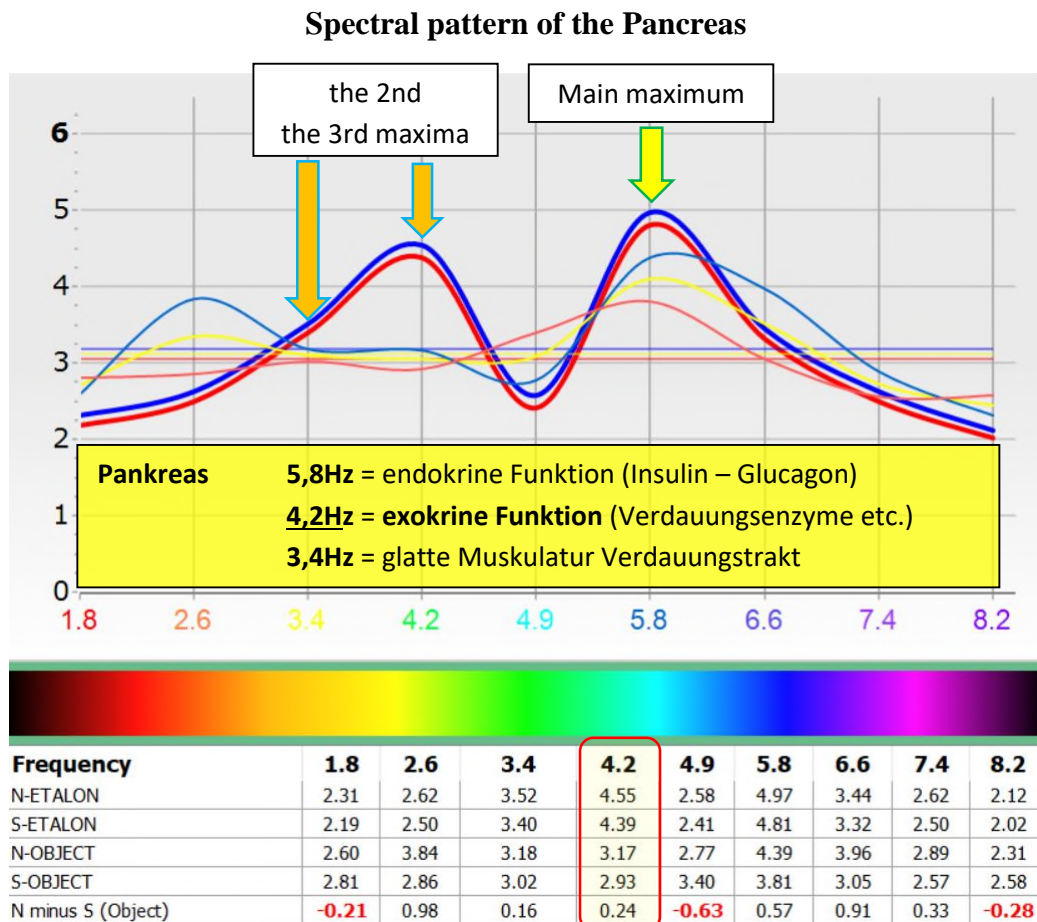
ATLAS

different objects and overview



Overview of typical etalons, the spectral curves and their interpretation

Let's first consider **physiological tissue curves** at the organ level. The question we ask ourselves here is: at what frequency is the **main maximum** and where is the **2nd or the 3rd secondary** maximum of the spectral pattern? (for a relative assessment).



In order to be able to come to a complete assessment of the spectrum, we now put together both spectral patterns, those of the physiological etalon (thick lines) and those of the measured object (thin lines) and ask ourselves the following questions:

* Which deviations of the **measured spectral curves** of the object can be detected at the **maxima** in relation to the **etalon of the optimal spectral pattern of an organ**?

* Which (thin) curve (blue / red) deviates most clearly from the (thick) curves (blue / red)?

=> the thin blue curve shows deviations at 1,8 / 2,6 / **4,2** / 5,8 / 6,6 / 7,4 / 8,2Hz.

=> the thin red curve shows deviations at **1,8** / 2,6 / **4,2** / 4,9 / 5,8 / 6,6 / **8.2**Hz.

* Where do both thin curves deviate together?

=> the thin blue and red curves together show deviations at 1,8 / 2,6 / **4,2** / 5,8 / 6,6 / 8,2Hz.

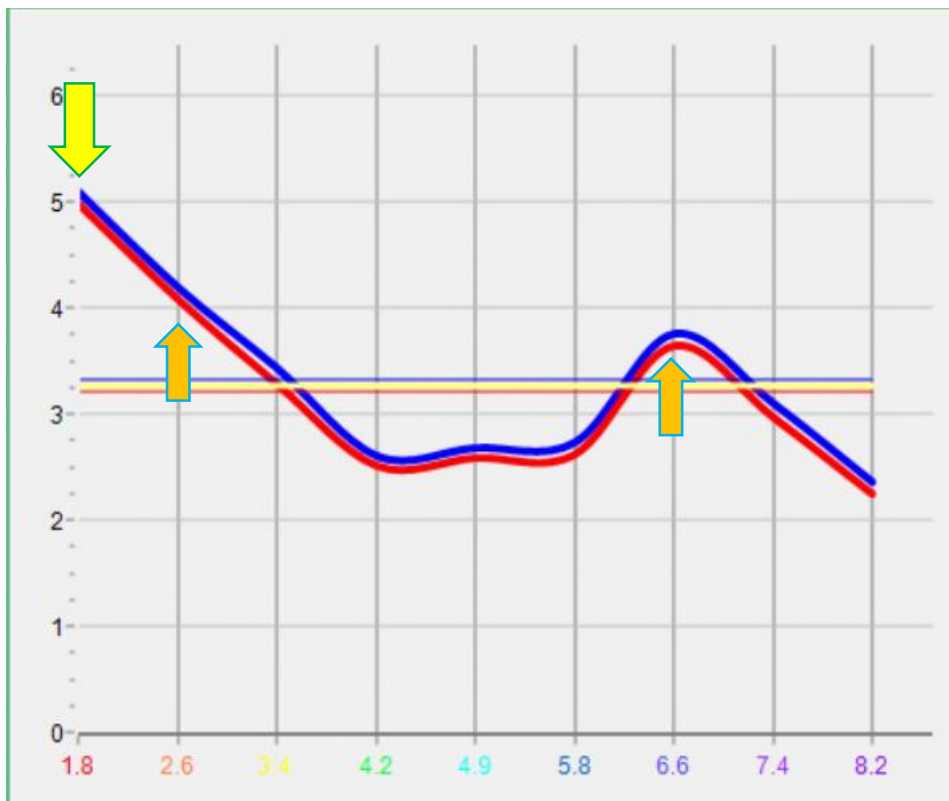
Now we can judge for ourselves which structures within the measured organ are disturbed and which remote effects or links exist with this process. First, let's consider physiological spectral patterns of various organs or organ structures. Based on the main maximum, we can see which structure or organ it is.

Organopreparations

Here you can see a short summary of the most important frequency values for the structures of the body:

Frequency	Structure
1,8 Hz	bone tissue - (coarse-fibrous) connective tissue - skin
2,6 Hz	(coarse-fibrous) and (loose) connective tissue (matrix) - joints - intervertebral discs - part of the striated musculature - ventricles of the heart - aorta - nose - larynx - trachea - bronchi (without epithelial cells) - erythrocytes - blood vessels
3,4 Hz	skeletal muscles - smooth muscles
4,2 Hz	epithelium (from single-layered to cubic) of the gastrointestinal tract - pancreas (exocrine)
4,9 Hz	epithelium of the gallbladder - the uterus – the fallopian tubes – the kidneys – the urinary bladder – the testicles – the ovaries
5,8 Hz	thymus - tonsils - lymphatic vessels - lymph - lymphoid tissue - spleen - hypothalamus – adrenal gland – pancreas (endocrine) – parotid gland – salivary gland – mammary gland - ovaries (stroma)
6,6 Hz	epithelium of the bronchi - trachea - peripheral nervous system - reticular substance - arachnoid gland - thyroid gland - parathyroid gland - adenohypophysis
7,4 Hz	alveoli - subcortex - arachnoid - neurohypophysis - cerebellum - spinal cord - sensorium (smell – touch - hearing)
8,2 Hz	cerebral cortex - retina

Organopreparation 'bone complex'



The main maximum here is **1.8Hz** (bone), the second maximum is **2.6Hz** (connective tissue), and the third maximum is **6.6Hz** (thyroid – parathyroid gland). It is typical that the **blue line (Yin)** is above the **red line (Yang)**. A distribution of 50:50 (whereby the two lines would run absolutely identically) is not possible in the unraveling, since it means a standstill, because it would have a power of 0 (zero). Therefore, when the Divine is projecting reality, we have a necessary shift of at least 51:49% (Yin:Yang or Yang:Yin) and thus life and dynamics are possible. There must always be more substance (Yin) than energy (Yang), because the law of the Universe says: **FIRST GIVE-THEN TAKE !.**



References and literature recommendations

<p>Energiemedizin – James L. Oschmann 2. Auflage 2009</p> <p>Wirkprinzipien der Naturheilkunde – Kay Uwe Kemmerer 1. Auflage 2008</p> <p>Eugen Schmidt, Selected Pharma GmbH Auflage 14.09.2018</p> <p>Die Wahrheit hinter der Medizin – Dr. Winfried Weber 6. Auflage 2018</p> <p>Krankheitsausdrucksform – Dr. Winfried Weber 1. Auflage 1993</p> <p>Energie und Informationsmedizin – Dr. Winfried Weber 1. Auflage 2018</p> <p>Global Scaling Basis eines neuen wissenschaftlichen Weltbildes – 1. Auflage 2009</p> <p>Die Welt mit neuen Augen sehen – Rainer Viehweger 1. Auflage 2010</p> <p>I-M-A-G-O – Ju. S. But 1. Auflage 2006</p> <p>Der transparente Quantenmensch – D. Cimbal & K. Boernert – 1. Auflage 2006</p> <p>Das Lehrbuch für die Vereinte Lebenskonforme Medizin – Dr. med. Bodo Köhler 2019</p> <p>Das Geheimnis des Lebens – Georges Lakhovsky 2. Auflage 2010</p> <p>Tachyonen Orgonenergie Skalarwellen – Marco Bischof 1. Auflage 2002</p> <p>Biophotonen das Licht in unseren Zellen – Marco Bischof 13. Auflage 2005</p> <p>Netzwerk Mensch – Ori Wolff 1. Auflage 2017</p> <p>Funktionelle Medizin Teil 1 u. 2. – Helmut W. Schimmel 1. Auflage 1991</p> <p>Funktionelle Medizin – Reinhard Bayerlein 1. Auflage Selected-Pharma GmbH 2013</p> <p>Funktionelle Embryologie – J.W. Rohen E. Lütjen-Decroll 5. Auflage 2016</p> <p>Die Mito-Medizin – Lee Know 1. Auflage 2018</p> <p>Fünf Wandlungsphasen in fünf Streichen – Antonius Pollmann 1. Auflage 1991</p> <p>Die Darm-Hirn-Connection – Gregor Hasler 1. Auflage 2019</p>	<p>Energy Medicine - James L. Oschmann 2nd Edition 2009</p> <p>Principles of action of Naturopathy - Kay Uwe Kemmerer 1st Edition 2008</p> <p>Eugen Schmidt, Selected Pharma GmbH Edition 14.09.2018</p> <p>The Truth behind Medicine - Dr. Winfried Weber 6th Edition 2018</p> <p>Disease as a form of expression - Dr. Winfried Weber 1st edition 1993</p> <p>Energy and Information Medicine - Dr. Winfried Weber 1st Edition 2018</p> <p>Global Scaling The basis of a new scientific worldview - 1st edition 2009</p> <p>Seeing the world with new eyes - Rainer Viehweger 1st Edition 2010</p> <p>I-M-A-G-O - Ju. See But 1st Edition 2006</p> <p>The Transparent Quantum Man - D. Cimbal & K. Boernert - 1st Edition 2006</p> <p>The textbook for the United Life-Conforming Medicine - Dr. med. Bodo Köhler 2019</p> <p>The Secret of Life - Georges Lakhovsky 2nd edition 2010</p> <p>Tachyons Orgone Energy Scalar Waves - Marco Bischof 1st Edition 2002</p> <p>Biophotons the light in our cells - Marco Bischof 13th Edition 2005</p> <p>Network of People - Ori Wolff 1st Edition 2017</p> <p>Functional Medicine Part 1 & 2. - Helmut W. Schimmel 1st Edition 1991</p> <p>Functional Medicine – Reinhard Bayerlein 1st Edition Selected-Pharma GmbH 2013</p> <p>Functional Embryology - J.W. Rohen E. Lütjen-Decroll 5th Edition 2016</p> <p>The Mito Medicine - Lee Know 1st Edition 2018</p> <p>Five phases of transformation in five strokes - Antonius Pollmann 1st Edition 1991</p> <p>The Gut-Brain Connection - Gregor Hasler</p>
--	---



<p>Von der NLS- zur MNLS-Methode – Klaus Valentiner 2. Auflage 2010 Grundlagen der TraditionellenEu- ropäischenNaturheilkunde – div. 2. Auflage 2013 Widerstandistzwecklos – Katrin Klink</p>	<p>1st Edition 2019 From the NLS to the MNLS method - Klaus Valentiner 2nd Edition 2010 Fundamentals of Traditional European Na- turoopathy - div. 2nd Edition 2013 Resistance is futile - Katrin Klink</p>
---	---

Right of use:

[1] The authors own the right of use for the image AdobeStock_71024237 – Man perfect.